

**Daily Direct Steer and Heifer Slaughter Cattle Summary**

For Trade on:

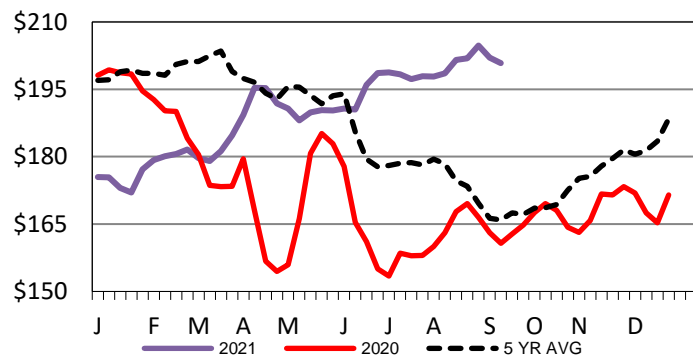
Thursday, September 16, 2021

<a href="#">LM CT100</a>	<b>5-AREA</b>	<a href="#">LM CT109</a>
<b>Neg. Cash Volume:</b>	3,524	<b>Dressed Formula Vol:</b> 32,976
Live Steer Avg:	\$124.08	Steer/Heifer Avg: \$203.92
Live Heifer Avg:	\$124.71	<b>Dressed Neg. Grid Vol:</b> 1,608
Dressed Steer Avg:	\$198.85	Steer/Heifer Avg: \$203.36
Dressed Heifer Avg:	\$197.84	<b>TOTAL VOLUME:</b> <b>38,108</b>
<a href="#">LM CT106</a>	<b>TOTAL WK TO DATE VOLUME:</b>	<b>228,071</b>
<b>Committed:</b>	<b>71,583</b>	<b>Delivered:</b> <b>62,775</b>

For Thursday in the Southern Plains cash trading was mostly inactive with light demand. In Nebraska and Western Cornbelt cash trading was limited with light demand. The last reported market in these regions was on Wednesday. In the Texas Panhandle live purchases traded at 124.00. In Kansas live purchases traded from 123.00-124.00. In Nebraska live and dressed purchases traded at 125.00 and 200.00, respectively. In the Western Cornbelt live and dressed purchases traded from 123.00-124.00 and at 200.00, respectively.

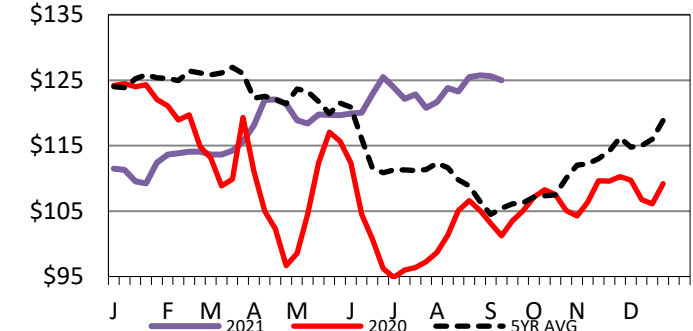
<a href="#">LM CT118</a>	<b>TX-OK-NM</b>	<a href="#">LM CT109</a>
<b>Neg. Cash Volume:</b>	120	<b>Dressed Formula Vol:</b> 10,301
Live Steer Avg:	N/A	Steer/Heifer Avg: \$200.35
Live Heifer Avg:	N/A	<b>Dressed Neg. Grid Vol:</b> 0
Dressed Steer Avg:	N/A	Steer/Heifer Avg: N/A
Dressed Heifer Avg:	N/A	<b>TOTAL VOLUME:</b> <b>10,421</b>
<a href="#">LM CT106</a>	<b>TOTAL WK TO DATE VOLUME:</b>	<b>57,384</b>
<b>Committed:</b>	<b>23,867</b>	<b>Delivered:</b> <b>18,106</b>

**Iowa-Minnesota Wkly Dress Steer Wtd Avg**  
WE 9-12-21 Price = \$200.82



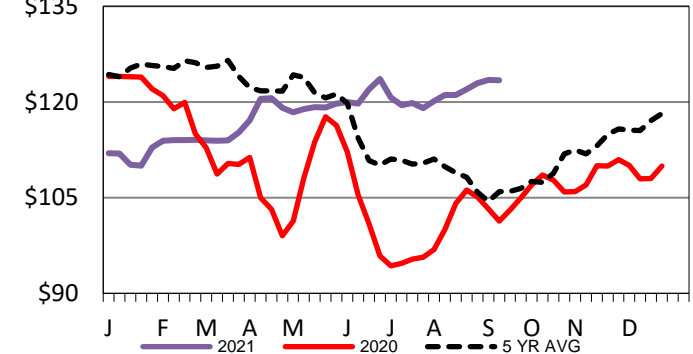
<a href="#">LM CT121</a>	<b>KANSAS</b>	<a href="#">LM CT109</a>
<b>Neg. Cash Volume:</b>	142	<b>Dressed Formula Vol:</b> 10,949
Live Steer Avg:	N/A	Steer/Heifer Avg: \$199.04
Live Heifer Avg:	N/A	<b>Dressed Neg. Grid Vol:</b> 0
Dressed Steer Avg:	\$200.00	Steer/Heifer Avg: N/A
Dressed Heifer Avg:	N/A	<b>TOTAL VOLUME:</b> <b>11,091</b>
<a href="#">LM CT106</a>	<b>TOTAL WK TO DATE VOLUME:</b>	<b>71,533</b>
<b>Committed:</b>	<b>20,555</b>	<b>Delivered:</b> <b>15,854</b>

**5-Area Live Steer Weighted Average**  
WE 9-12-21 Price = \$124.96



<a href="#">LM CT124</a>	<b>NEBRASKA</b>	<a href="#">LM CT109</a>
<b>Neg. Cash Volume:</b>	1,062	<b>Dressed Formula Vol:</b> 5,950
Live Steer Avg:	N/A	Steer/Heifer Avg: \$209.54
Live Heifer Avg:	\$125.00	<b>Dressed Neg. Grid Vol:</b> 163
Dressed Steer Avg:	\$199.75	Steer/Heifer Avg: \$204.06
Dressed Heifer Avg:	\$200.00	<b>TOTAL VOLUME:</b> <b>7,175</b>
<a href="#">LM CT106</a>	<b>TOTAL WK TO DATE VOLUME:</b>	<b>52,118</b>
<b>Committed:</b>	<b>14,212</b>	<b>Delivered:</b> <b>17,049</b>

**Kansas Weekly Live Steer Weighted Average**  
WE 9-12-21 Price = \$123.39



<a href="#">LM CT134</a>	<b>COLORADO</b>	<a href="#">LM CT109</a>
<b>Neg. Cash Volume:</b>	0	<b>Dressed Formula Vol:</b> 3,606
Live Steer Avg:	N/A	Steer/Heifer Avg: \$218.42
Live Heifer Avg:	N/A	<b>Dressed Neg. Grid Vol:</b> 886
Dressed Steer Avg:	N/A	Steer/Heifer Avg: \$202.21
Dressed Heifer Avg:	N/A	<b>TOTAL VOLUME:</b> <b>4,492</b>
<a href="#">LM CT106</a>	<b>TOTAL WK TO DATE VOLUME:</b>	<b>22,526</b>
<b>Committed:</b>	<b>4,866</b>	<b>Delivered:</b> <b>4,482</b>

<a href="#">LM CT137</a>	<b>IA-MN</b>	<a href="#">LM CT109</a>
<b>Neg. Cash Volume:</b>	2,200	<b>Dressed Formula Vol:</b> 2,323
Live Steer Avg:	\$124.08	Steer/Heifer Avg: \$207.22
Live Heifer Avg:	\$124.00	<b>Dressed Neg. Grid Vol:</b> 597
Dressed Steer Avg:	\$197.60	Steer/Heifer Avg: \$205.58
Dressed Heifer Avg:	\$197.34	<b>TOTAL VOLUME:</b> <b>5,120</b>
<a href="#">LM CT106</a>	<b>TOTAL WK TO DATE VOLUME:</b>	<b>25,275</b>
<b>Committed:</b>	<b>8,083</b>	<b>Delivered:</b> <b>7,284</b>

**USDA Livestock, Poultry and Grain Market News**

St. Joseph, Missouri  
Phone: 816-676-7000

[stjoe.lpgmn@ams.usda.gov](mailto:stjoe.lpgmn@ams.usda.gov)