

Daily Direct Steer and Heifer Slaughter Cattle Summary

For Trade on:

Wednesday, January 20, 2021

LM_CT100	5-AREA	LM_CT109	
Neg. Cash Volume:	31,256	Dressed Formula Vol:	35,763
Live Steer Avg:	\$109.52	Steer/Heifer Avg:	\$179.70
Live Heifer Avg:	\$109.77	Dressed Neg. Grid Vol:	2,456
Dressed Steer Avg:	\$172.00	Steer/Heifer Avg:	\$178.48
Dressed Heifer Avg:	\$173.00	TOTAL VOLUME:	69,475
LM_CT106	TOTAL WK TO DATE VOLUME:		126,819
Committed:	78,018	Delivered:	69,470

LM_CT118	TX-OK-NM	LM_CT109	
Neg. Cash Volume:	2,494	Dressed Formula Vol:	4,914
Live Steer Avg:	\$109.94	Steer/Heifer Avg:	\$175.47
Live Heifer Avg:	\$110.29	Dressed Neg. Grid Vol:	11
Dressed Steer Avg:	\$0.00	Steer/Heifer Avg:	\$153.20
Dressed Heifer Avg:	\$0.00	TOTAL VOLUME:	7,419
LM_CT106	TOTAL WK TO DATE VOLUME:		19,222
Committed:	15,241	Delivered:	14,900

LM_CT121	KANSAS	LM_CT109	
Neg. Cash Volume:	16,328	Dressed Formula Vol:	13,944
Live Steer Avg:	\$109.94	Steer/Heifer Avg:	\$179.23
Live Heifer Avg:	\$109.92	Dressed Neg. Grid Vol:	512
Dressed Steer Avg:	\$0.00	Steer/Heifer Avg:	\$179.22
Dressed Heifer Avg:	\$0.00	TOTAL VOLUME:	30,784
LM_CT106	TOTAL WK TO DATE VOLUME:		59,105
Committed:	30,674	Delivered:	20,065

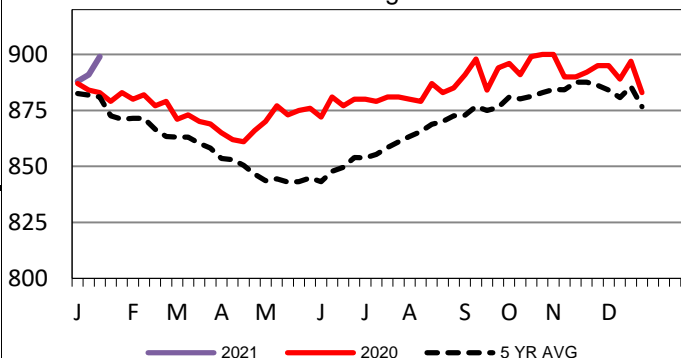
LM_CT124	NEBRASKA	LM_CT109	
Neg. Cash Volume:	10,532	Dressed Formula Vol:	10,278
Live Steer Avg:	\$109.15	Steer/Heifer Avg:	\$182.19
Live Heifer Avg:	\$109.52	Dressed Neg. Grid Vol:	1,272
Dressed Steer Avg:	\$172.00	Steer/Heifer Avg:	\$179.70
Dressed Heifer Avg:	\$173.00	TOTAL VOLUME:	22,082
LM_CT106	TOTAL WK TO DATE VOLUME:		33,883
Committed:	22,230	Delivered:	17,268

LM_CT134	COLORADO	LM_CT109	
Neg. Cash Volume:	1,294	Dressed Formula Vol:	3,676
Live Steer Avg:	\$109.54	Steer/Heifer Avg:	\$183.14
Live Heifer Avg:	\$109.71	Dressed Neg. Grid Vol:	450
Dressed Steer Avg:	\$0.00	Steer/Heifer Avg:	\$176.50
Dressed Heifer Avg:	\$0.00	TOTAL VOLUME:	5,420
LM_CT106	TOTAL WK TO DATE VOLUME:		12,192
Committed:	5,871	Delivered:	8,620

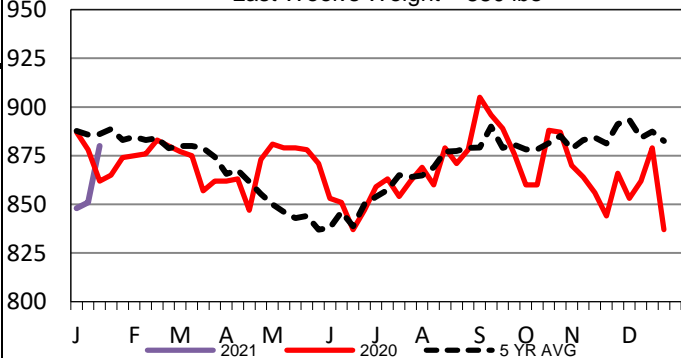
LM_CT137	IA-MN	LM_CT109	
Neg. Cash Volume:	608	Dressed Formula Vol:	2,990
Live Steer Avg:	\$107.91	Steer/Heifer Avg:	\$175.82
Live Heifer Avg:	\$0.00	Dressed Neg. Grid Vol:	211
Dressed Steer Avg:	\$0.00	Steer/Heifer Avg:	\$174.92
Dressed Heifer Avg:	\$0.00	TOTAL VOLUME:	3,809
LM_CT106	TOTAL WK TO DATE VOLUME:		12,904
Committed:	4,002	Delivered:	8,617

Wednesday in Kansas trading and demand were moderate. Live traded unevenly steady at 110.00. In the Texas trading was limited on light demand. Live traded steady to 1.00 lower mostly at 110.00. In Nebraska cash trading was slow to moderate with light demand. Live traded steady from 109.00-110.00. Last week dressed traded from 172.00-174.00. In Colorado cash trading was slow on moderate demand. Live traded steady to 1.00 higher from 109.00-110.00. In IA/MN trading was mostly inactive on light demand. Last week live and dressed traded from 108.00-109.00 and at 173.00, respectively.

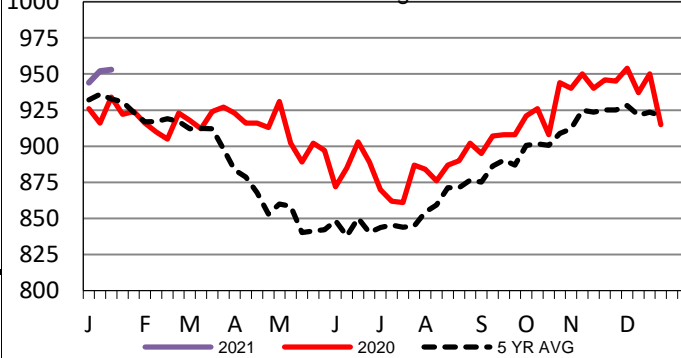
5-Area Formula Carcass Weight
Last Week's Weight = 899 lbs



Colorado Formula Carcass Weights
Last Week's Weight = 880 lbs



Iowa-Minnesota Formula Carcass Weights
Last Week's Weight = 953 lbs



USDA Livestock, Poultry and Grain Market News

St. Joseph, Missouri

Phone: 816-676-7000

stjoe.lpgmn@ams.usda.gov