

Daily Direct Steer and Heifer Slaughter Cattle Summary

For Trade on:

Monday, July 28, 2025

LM CT100	5-Area	LM CT109	
Neg. Cash Volume:	298	Dressed Formula Vol:	38,059
Live Steer Avg:	\$246.85	Steer/Heifer Avg:	\$372.93
Live Heifer Avg:	N/A	Dressed Neg. Grid Vol:	4,438
Dressed Steer Avg:	N/A	Steer/Heifer Avg:	\$371.37
Dressed Heifer Avg:	N/A	TOTAL VOLUME:	42,795
LM CT106	TOTAL WK TO DATE VOLUME:	42,795	
Committed:	82,716	Delivered:	66,751

LM CT118	TX-OK-NM	LM CT109	
Neg. Cash Volume:	0	Dressed Formula Vol:	10,487
Live Steer Avg:	N/A	Steer/Heifer Avg:	\$367.34
Live Heifer Avg:	N/A	Dressed Neg. Grid Vol:	0
Dressed Steer Avg:	N/A	Steer/Heifer Avg:	N/A
Dressed Heifer Avg:	N/A	TOTAL VOLUME:	10,487
LM CT106	TOTAL WK TO DATE VOLUME:	10,487	
Committed:	40,233	Delivered:	19,032

LM CT121	KANSAS	LM CT109	
Neg. Cash Volume:	111	Dressed Formula Vol:	17,586
Live Steer Avg:	N/A	Steer/Heifer Avg:	\$368.47
Live Heifer Avg:	N/A	Dressed Neg. Grid Vol:	775
Dressed Steer Avg:	N/A	Steer/Heifer Avg:	\$358.97
Dressed Heifer Avg:	N/A	TOTAL VOLUME:	18,361
LM CT106	TOTAL WK TO DATE VOLUME:		18,472
Committed:	18,511	Delivered:	19,925

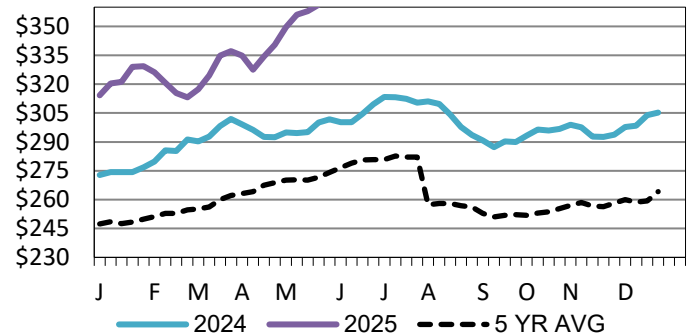
LM CT124	NEBRASKA	LM CT109	
Neg. Cash Volume:	170	Dressed Formula Vol:	5,952
Live Steer Avg:	N/A	Steer/Heifer Avg:	\$388.21
Live Heifer Avg:	N/A	Dressed Neg. Grid Vol:	1,687
Dressed Steer Avg:	N/A	Steer/Heifer Avg:	\$369.88
Dressed Heifer Avg:	N/A	TOTAL VOLUME:	7,809
LM CT106	TOTAL WK TO DATE VOLUME:		7,809
Committed:	9,511	Delivered:	11,342

LM CT134	COLORADO	LM CT109	
Neg. Cash Volume:	0	Dressed Formula Vol:	1,935
Live Steer Avg:	N/A	Steer/Heifer Avg:	\$382.93
Live Heifer Avg:	N/A	Dressed Neg. Grid Vol:	35
Dressed Steer Avg:	N/A	Steer/Heifer Avg:	\$385.46
Dressed Heifer Avg:	N/A	TOTAL VOLUME:	1,970
LM CT106	TOTAL WK TO DATE VOLUME:		1,970
Committed:	8,435	Delivered:	7,022

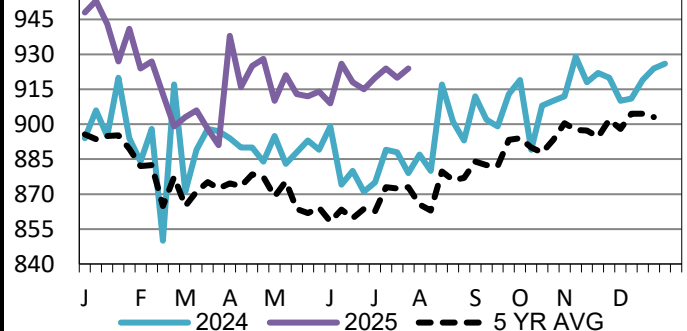
LM CT137	IA-MN	LM CT109	
Neg. Cash Volume:	17	Dressed Formula Vol:	2,286
Live Steer Avg:	N/A	Steer/Heifer Avg:	\$385.63
Live Heifer Avg:	N/A	Dressed Neg. Grid Vol:	1,941
Dressed Steer Avg:	N/A	Steer/Heifer Avg:	\$376.86
Dressed Heifer Avg:	N/A	TOTAL VOLUME:	4,244
LM CT106	TOTAL WK TO DATE VOLUME:		4,244
Committed:	6,026	Delivered:	9,430

On Monday, negotiated cash trade was mostly inactive on moderate demand. The last established market in the Texas Panhandle was last week from 230.00-232.00. The last established market in Kansas was last week from 230.00-232.00. The last established market in Nebraska was last week with live purchases from 242.00-245.00 and dressed purchases at 380.00. The last established market in the Western Cornbelt was last week with live purchases from 238.00-242.00, mostly 240.00, and dressed purchases at 380.00 on a light test.

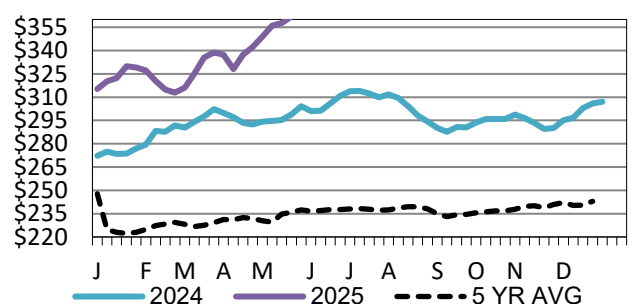
Iowa-Minnesota Wkly Dress Steer Wtd Avg WE
07-27-2025 Price = \$379.24



Colorado Formula Carcass Weights
WE 07-27-2025 Weight = 924 lbs



Nebraska Weekly Dressed Steer Weighted Avg
WE 07-27-2025 Price = \$379.62



USDA Livestock, Poultry and Grain Market News

Kansas City, MO

Phone: 816-676-7000

stjoe.lpgmn@ams.usda.gov