

## Daily Direct Steer and Heifer Slaughter Cattle Summary

For Trade on:

Tuesday, July 15, 2025

<a href="#">LM CT100</a>	<b>5-Area</b>	<a href="#">LM CT109</a>
<b>Neg. Cash Volume:</b>	1,726	<b>Dressed Formula Vol:</b> 40,601
<b>Live Steer Avg:</b>	\$230.79	<b>Steer/Heifer Avg:</b> \$363.16
<b>Live Heifer Avg:</b>	\$231.13	<b>Dressed Neg. Grid Vol:</b> 5,296
<b>Dressed Steer Avg:</b>	\$378.56	<b>Steer/Heifer Avg:</b> \$373.25
<b>Dressed Heifer Avg:</b>	N/A	<b>TOTAL VOLUME:</b> 47,623
<a href="#">LM CT106</a>	<b>TOTAL WK TO DATE VOLUME:</b>	<b>99,740</b>
<b>Committed:</b>	<b>54,385</b>	<b>Delivered:</b> 72,229

<a href="#">LM CT118</a>	<b>TX-OK-NM</b>	<a href="#">LM CT109</a>
<b>Neg. Cash Volume:</b>	25	<b>Dressed Formula Vol:</b> 14,911
<b>Live Steer Avg:</b>	N/A	<b>Steer/Heifer Avg:</b> \$356.38
<b>Live Heifer Avg:</b>	N/A	<b>Dressed Neg. Grid Vol:</b> 0
<b>Dressed Steer Avg:</b>	N/A	<b>Steer/Heifer Avg:</b> N/A
<b>Dressed Heifer Avg:</b>	N/A	<b>TOTAL VOLUME:</b> 14,936
<a href="#">LM CT106</a>	<b>TOTAL WK TO DATE VOLUME:</b>	<b>29,692</b>
<b>Committed:</b>	<b>2,832</b>	<b>Delivered:</b> 19,317

<a href="#">LM CT121</a>	<b>KANSAS</b>	<a href="#">LM CT109</a>
<b>Neg. Cash Volume:</b>	1,000	<b>Dressed Formula Vol:</b> 15,109
<b>Live Steer Avg:</b>	\$230.00	<b>Steer/Heifer Avg:</b> \$359.68
<b>Live Heifer Avg:</b>	\$230.00	<b>Dressed Neg. Grid Vol:</b> 937
<b>Dressed Steer Avg:</b>	N/A	<b>Steer/Heifer Avg:</b> \$366.37
<b>Dressed Heifer Avg:</b>	N/A	<b>TOTAL VOLUME:</b> 17,046
<a href="#">LM CT106</a>	<b>TOTAL WK TO DATE VOLUME:</b>	<b>38,520</b>
<b>Committed:</b>	<b>26,243</b>	<b>Delivered:</b> 20,588

<a href="#">LM CT124</a>	<b>NEBRASKA</b>	<a href="#">LM CT109</a>
<b>Neg. Cash Volume:</b>	0	<b>Dressed Formula Vol:</b> 5,291
<b>Live Steer Avg:</b>	N/A	<b>Steer/Heifer Avg:</b> \$377.98
<b>Live Heifer Avg:</b>	N/A	<b>Dressed Neg. Grid Vol:</b> 2,986
<b>Dressed Steer Avg:</b>	N/A	<b>Steer/Heifer Avg:</b> \$372.08
<b>Dressed Heifer Avg:</b>	N/A	<b>TOTAL VOLUME:</b> 8,277
<a href="#">LM CT106</a>	<b>TOTAL WK TO DATE VOLUME:</b>	<b>18,297</b>
<b>Committed:</b>	<b>16,405</b>	<b>Delivered:</b> 16,346

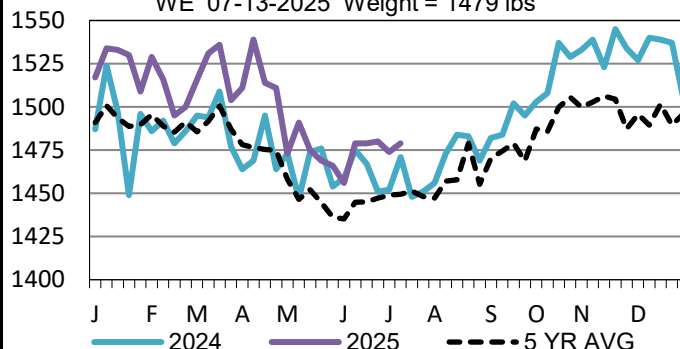
<a href="#">LM CT134</a>	<b>COLORADO</b>	<a href="#">LM CT109</a>
<b>Neg. Cash Volume:</b>	0	<b>Dressed Formula Vol:</b> 3,516
<b>Live Steer Avg:</b>	N/A	<b>Steer/Heifer Avg:</b> \$371.11
<b>Live Heifer Avg:</b>	N/A	<b>Dressed Neg. Grid Vol:</b> 0
<b>Dressed Steer Avg:</b>	N/A	<b>Steer/Heifer Avg:</b> N/A
<b>Dressed Heifer Avg:</b>	N/A	<b>TOTAL VOLUME:</b> 3,516
<a href="#">LM CT106</a>	<b>TOTAL WK TO DATE VOLUME:</b>	<b>7,025</b>
<b>Committed:</b>	<b>4,243</b>	<b>Delivered:</b> 6,989

<a href="#">LM CT137</a>	<b>IA-MN</b>	<a href="#">LM CT109</a>
<b>Neg. Cash Volume:</b>	701	<b>Dressed Formula Vol:</b> 1,815
<b>Live Steer Avg:</b>	\$238.00	<b>Steer/Heifer Avg:</b> \$389.46
<b>Live Heifer Avg:</b>	\$233.00	<b>Dressed Neg. Grid Vol:</b> 1,373
<b>Dressed Steer Avg:</b>	\$378.56	<b>Steer/Heifer Avg:</b> \$380.49
<b>Dressed Heifer Avg:</b>	N/A	<b>TOTAL VOLUME:</b> 3,889
<a href="#">LM CT106</a>	<b>TOTAL WK TO DATE VOLUME:</b>	<b>6,536</b>
<b>Committed:</b>	<b>4,662</b>	<b>Delivered:</b> 8,989

On Tuesday, negotiated cash trade in Kansas was limited on moderate demand, with a few purchases at 230.00, but not enough for an adequate market test. The last established market in Kansas was last week ranging from 225.00-230.00, mostly at 230.00. Negotiated cash trade was mostly inactive on moderate demand in all other feeding regions. The last established market in the Texas Panhandle was last week from 228.00-230.00. The last established market in Nebraska was last week, with live purchases from 240.00-241.00 and dressed purchases at 380.00. The last established market in the Western Cornbelt was last week, with live purchases ranging from 235.00-240.00, mostly at 240.00. Dressed purchases in the Western Cornbelt last week were at 380.00.

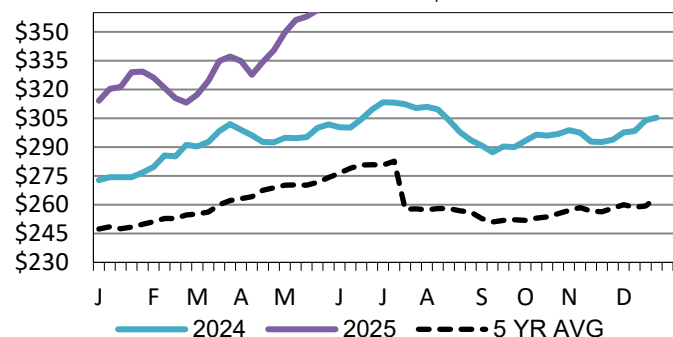
## 5-Area Negotiated Cash Live Steer Weights

WE 07-13-2025 Weight = 1479 lbs



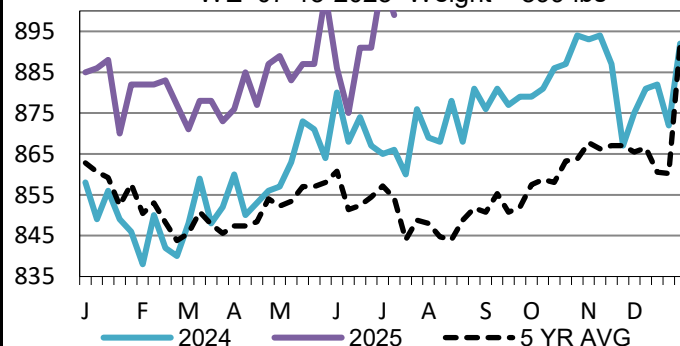
## Iowa-Minnesota Wkly Dress Steer Wtd Avg WE

07-13-2025 Price = \$378.67



## TX-OK-NM Formula Carcass Weights

WE 07-13-2025 Weight = 899 lbs



## USDA Livestock, Poultry and Grain Market News

Kansas City, MO

Phone: 816-676-7000

[stjoe.lpgmn@ams.usda.gov](mailto:stjoe.lpgmn@ams.usda.gov)