

**Daily Direct Steer and Heifer Slaughter Cattle Summary**

For Trade on:

Thursday, January 21, 2021

<a href="#">LM_CT100</a>	<b>5-AREA</b>	<a href="#">LM_CT109</a>
<b>Neg. Cash Volume:</b>	38,791	<b>Dressed Formula Vol:</b> 28,185
Live Steer Avg:	\$109.48	Steer/Heifer Avg: \$177.15
Live Heifer Avg:	\$109.88	<b>Dressed Neg. Grid Vol:</b> 2,291
Dressed Steer Avg:	\$172.60	Steer/Heifer Avg: \$176.99
Dressed Heifer Avg:	\$172.67	<b>TOTAL VOLUME:</b> <b>69,267</b>
<a href="#">LM_CT106</a>	<b>TOTAL WK TO DATE VOLUME:</b> <b>196,086</b>	
<b>Committed:</b>	<b>92,674</b>	<b>Delivered:</b> <b>70,242</b>

<a href="#">LM_CT118</a>	<b>TX-OK-NM</b>	<a href="#">LM_CT109</a>
<b>Neg. Cash Volume:</b>	1,908	<b>Dressed Formula Vol:</b> 5,751
Live Steer Avg:	\$110.90	Steer/Heifer Avg: \$174.10
Live Heifer Avg:	\$111.00	<b>Dressed Neg. Grid Vol:</b> 0
Dressed Steer Avg:	\$0.00	Steer/Heifer Avg: \$0.00
Dressed Heifer Avg:	\$0.00	<b>TOTAL VOLUME:</b> <b>7,659</b>
<a href="#">LM_CT106</a>	<b>TOTAL WK TO DATE VOLUME:</b> <b>26,881</b>	
<b>Committed:</b>	<b>19,027</b>	<b>Delivered:</b> <b>14,658</b>

<a href="#">LM_CT121</a>	<b>KANSAS</b>	<a href="#">LM_CT109</a>
<b>Neg. Cash Volume:</b>	3,894	<b>Dressed Formula Vol:</b> 10,090
Live Steer Avg:	\$110.90	Steer/Heifer Avg: \$177.80
Live Heifer Avg:	\$110.48	<b>Dressed Neg. Grid Vol:</b> 0
Dressed Steer Avg:	\$173.00	Steer/Heifer Avg: \$0.00
Dressed Heifer Avg:	\$0.00	<b>TOTAL VOLUME:</b> <b>13,984</b>
<a href="#">LM_CT106</a>	<b>TOTAL WK TO DATE VOLUME:</b> <b>73,089</b>	
<b>Committed:</b>	<b>22,049</b>	<b>Delivered:</b> <b>20,482</b>

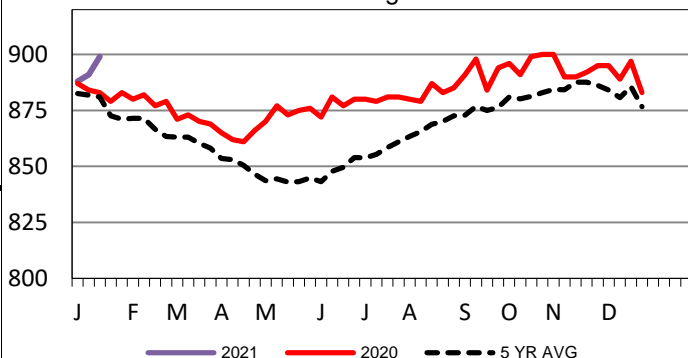
<a href="#">LM_CT124</a>	<b>NEBRASKA</b>	<a href="#">LM_CT109</a>
<b>Neg. Cash Volume:</b>	18,004	<b>Dressed Formula Vol:</b> 6,924
Live Steer Avg:	\$109.32	Steer/Heifer Avg: \$177.61
Live Heifer Avg:	\$109.29	<b>Dressed Neg. Grid Vol:</b> 263
Dressed Steer Avg:	\$172.84	Steer/Heifer Avg: \$177.40
Dressed Heifer Avg:	\$172.88	<b>TOTAL VOLUME:</b> <b>25,191</b>
<a href="#">LM_CT106</a>	<b>TOTAL WK TO DATE VOLUME:</b> <b>59,074</b>	
<b>Committed:</b>	<b>24,636</b>	<b>Delivered:</b> <b>16,005</b>

<a href="#">LM_CT134</a>	<b>COLORADO</b>	<a href="#">LM_CT109</a>
<b>Neg. Cash Volume:</b>	1,125	<b>Dressed Formula Vol:</b> 2,392
Live Steer Avg:	\$110.00	Steer/Heifer Avg: \$182.26
Live Heifer Avg:	\$110.00	<b>Dressed Neg. Grid Vol:</b> 1,215
Dressed Steer Avg:	\$0.00	Steer/Heifer Avg: \$177.83
Dressed Heifer Avg:	\$0.00	<b>TOTAL VOLUME:</b> <b>4,732</b>
<a href="#">LM_CT106</a>	<b>TOTAL WK TO DATE VOLUME:</b> <b>16,924</b>	
<b>Committed:</b>	<b>6,692</b>	<b>Delivered:</b> <b>9,311</b>

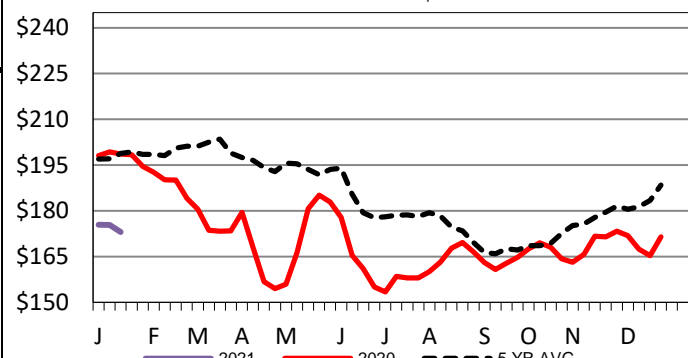
<a href="#">LM_CT137</a>	<b>IA-MN</b>	<a href="#">LM_CT109</a>
<b>Neg. Cash Volume:</b>	13,860	<b>Dressed Formula Vol:</b> 3,241
Live Steer Avg:	\$108.65	Steer/Heifer Avg: \$175.62
Live Heifer Avg:	\$108.96	<b>Dressed Neg. Grid Vol:</b> 844
Dressed Steer Avg:	\$172.06	Steer/Heifer Avg: \$175.67
Dressed Heifer Avg:	\$172.35	<b>TOTAL VOLUME:</b> <b>17,945</b>
<a href="#">LM_CT106</a>	<b>TOTAL WK TO DATE VOLUME:</b> <b>30,849</b>	
<b>Committed:</b>	<b>20,270</b>	<b>Delivered:</b> <b>9,786</b>

Thursday in the Southern Plains cash trading was limited on light demand. In the Texas live traded 1.00 higher at 111.00. In Kansas live traded steady to 1.00 higher from 110.00-111.00. In Nebraska cash trading and demand were moderate. Live traded steady from 109.00-110.00, dressed traded unevenly steady at 173.00. In Colorado cash trading was slow on light demand. Live traded steady to 1.00 higher at 110.00. In the Western Cornbelt cash trading was slow on moderate demand. Live traded steady to 1.00 higher from 108.00-110.00, dressed traded steady to 3.00 lower from 170.00-173.00.

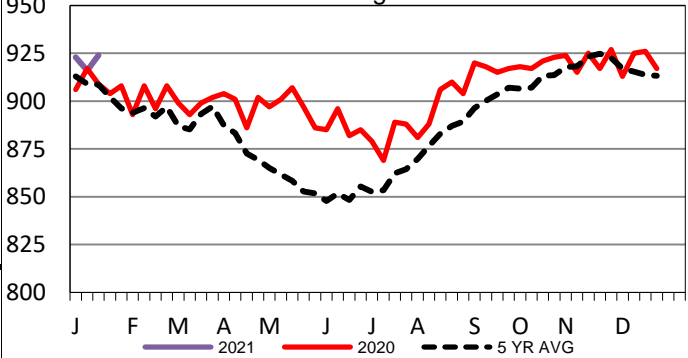
**5-Area Formula Carcass Weight**  
Last Week's Weight = 899 lbs



**Iowa-Minnesota Wkly Dressed Steer Wtd Avg**  
Last Week's Price = \$173.06



**Nebraska Formula Carcass Weights**  
Last Week's Weight = 916 lbs



**USDA Livestock, Poultry and Grain Market News**

St. Joseph, Missouri

Phone: 816-676-7000

[stjoe.lpgmn@ams.usda.gov](mailto:stjoe.lpgmn@ams.usda.gov)