

# TEXAS WEEKLY SUMMARY

Week Ending **October 24, 2020**

Receipts: This Week 20,000 Last Week 13,200 Year Ago 23,200

Compared to last week: Feeder steers and heifers sold 3.00 to as much as 11.00 lower. Trade activity was moderate on light to moderate demand. A frigid forecast for next week expected, which causes concern for non vaccinated or fleshy calves. Slaughter cows and bulls sold 2.00 to 4.00 lower. Hay trades are mostly steady to firm in all regions. In the Texas High Plains grain markets the bulk of bids were 18 to 19 cents higher on grain sorghum; 11 cents higher on wheat; and 16 to 17 cents higher on corn.

\*\*\*This report will be discontinued on November 9th. Please refer to the links below to find the individual reports data.\*\*\*

Feeders - [https://www.ams.usda.gov/mnreports/ams\\_1955.pdf](https://www.ams.usda.gov/mnreports/ams_1955.pdf) / [https://www.ams.usda.gov/mnreports/ams\\_2710.pdf](https://www.ams.usda.gov/mnreports/ams_2710.pdf)

Grains - [https://www.ams.usda.gov/mnreports/ams\\_2711.pdf](https://www.ams.usda.gov/mnreports/ams_2711.pdf) / Hays - [https://www.ams.usda.gov/mnreports/ams\\_2707.pdf](https://www.ams.usda.gov/mnreports/ams_2707.pdf)

Texas Average Liveweight - [https://www.ams.usda.gov/mnreports/ams\\_2483.pdf](https://www.ams.usda.gov/mnreports/ams_2483.pdf)

## TEXAS WEEKLY FEEDER CATTLE AVERAGES (Combined Direct and Auctions)

Direct

Auctions

### FEEDER STEERS:

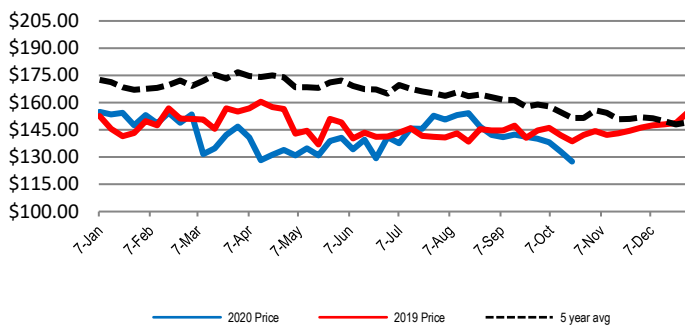
	<u>M&amp;L 1</u>	<u>M&amp;L 1-2</u>	<u>M&amp;L 2</u>
400-500 LBS	\$147.06	\$127.90	\$128.83
500-600 LBS	\$135.25	\$126.89	\$118.04
600-700 LBS	\$130.34	\$122.81	\$106.88
700-800 LBS	\$135.83	\$126.24	\$106.52
800-900 LBS	\$133.00	\$106.00	\$105.00

### FEEDER HEIFERS:

	<u>M&amp;L 1</u>	<u>M&amp;L 1-2</u>	<u>M&amp;L 2</u>
400-500 LBS	\$128.01	\$118.32	\$107.95
500-600 LBS	\$118.05	\$106.97	\$96.63
600-700 LBS	\$122.50	\$107.95	\$96.33
700-800 LBS	\$110.38	\$119.02	\$86.00
800-900 LBS	\$112.03	\$95.66	N/A

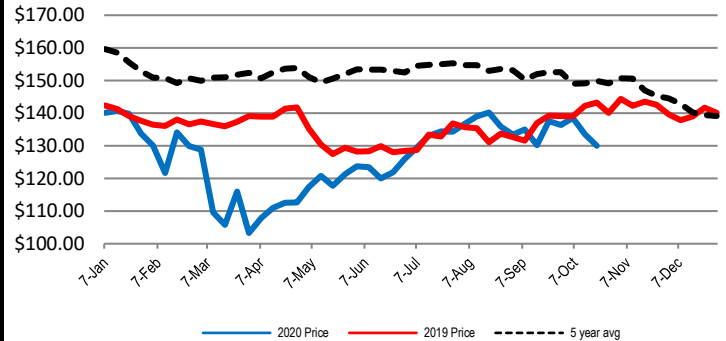
### WEEKLY 600 LB STEER PRICE M&L 1, 1-2, 2

Weekly combined auction & direct sales 500-700 lbs



### WEEKLY 800 LB STEER PRICE M&L 1, 1-2, 2

Weekly combined auction & direct sales 700-900 lbs



### SLAUGHTER COWS

	<u>% Lean</u>	<u>Price Range</u>
Breakers	75-80	\$44.00 - \$53.00
Boners	80-85	\$42.50 - \$52.50
Lean	85-90	\$37.50 - \$51.50

### TEXAS FED CATTLE AVERAGE LIVE WEIGHT

	<u>Avg Live Wt</u>	<u>Slaughter</u>	<u>% Heifers</u>
W/E 10/19/20	1372	6,163	51%
Previous Week	1372	10,913	41%
Same Wk Yr Ago	1326	1,600	36%

### TEXAS WEEKLY REPLACEMENT STOCK

Bred Cows - Young to Aged - Per Head

<u>Weight</u>	<u>Months bred</u>	<u>Price Range</u>
900-1000 lbs	1 to 3	\$600.00 - \$880.00
1000-1100 lbs	4 to 6	N/A - N/A
1100-1200 lbs	4 to 6	N/A - N/A
1200-1400 lbs	1 to 9	N/A - N/A

Cow/Calf Pairs - Young to Aged

<u>Cows' Weight</u>	<u>Calves' Weight</u>	<u>Price Range</u>
1000-1100 lbs	150-300 lbs	\$775.00 - \$800.00
1100-1200 lbs	<150 lbs	N/A - N/A
1200-1300 lbs	150-300 lbs	\$850.00 - \$1,085.00
1300-1400 lbs	150-300 lbs	N/A - N/A

### ALFALFA

	<u>Panhandle</u>	<u>West</u>	<u>North Central/East</u>	<u>South</u>
SM SQ Supreme/Premium	\$268.00 DEL	\$267.00 FOB	N/A DEL	N/A FOB
SM SQ Good/Premium	N/A DEL	N/A FOB	N/A DEL	N/A FOB
LG SQ Supreme/Premium (Sup)	\$252.00 DEL	\$225.00 FOB	\$227.00 DEL	N/A FOB
LG SQ Good/Premium (Prem)	\$220.00 DEL	N/A FOB	N/A DEL	N/A FOB
CHOPPED	\$207.00 DEL	N/A	N/A	N/A

### COASTAL BERMUDA

SM SQ Good/Premium	N/A /b DEL	N/A /b FOB	\$9.00 /b FOB	\$9.00 /b FOB
LG RND Good/Premium	N/A /r DEL	N/A /r FOB	\$65.00 /r FOB	\$87.00 /r FOB

### TEXAS WEEKLY GRAIN PRICES

(Prices paid or bid to producers - FOB Elevator)

	<u>Sorghum</u>	<u>Wheat</u>	<u>Corn</u>
North of Canadian River	\$4.98	\$5.40	\$4.48
Triangle Area	\$4.85	\$5.33	\$4.59
Plainview to Canyon to Farwell			

USDA Livestock & Grain Market News  
Amarillo, TX  
Phone: (806) 356-5759  
Email:  
[tess.liles@usda.gov](mailto:tess.liles@usda.gov)

South From Plainview to Muleshoe

\$4.82

\$5.25

\$4.63

[www.ams.usda.gov/lsmarketnews](http://www.ams.usda.gov/lsmarketnews)