

# TEXAS WEEKLY SUMMARY

Week Ending

October 17, 2020

Receipts: This Week 13,200 Last Week 15,200 Year Ago 23,400

Compared to last week Feeder steers and heifers sold 1.00 to 5.00 lower. Trade activity and demand were moderate. Unweaned or fleshy calves were heavily discounted as we head into colder forecasted weather and the drought continues to plague wheat pastures. Slaughter cows and bulls sold 2.00 to 4.00 lower. Hay trades are mostly steady to firm in all regions. In the Texas High Plains grain markets the bulk of bids were 6 to 9 cents higher on grain sorghum; 24 cents higher on wheat; and 28 to 36 cents higher on corn.

## TEXAS WEEKLY FEEDER CATTLE AVERAGES (Combined Direct and Auctions)

Direct

Auctions

### FEEDER STEERS:

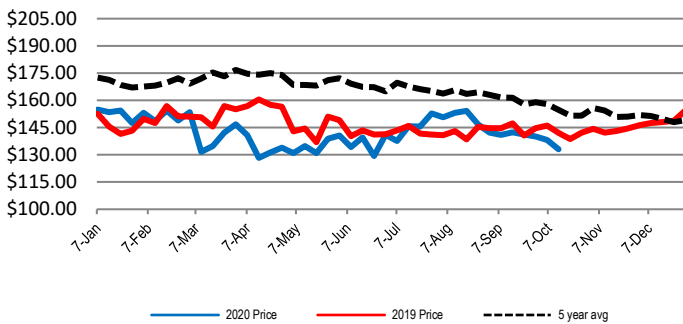
	M&L 1	M&L 1-2	M&L 2
400-500 LBS	\$145.33	\$143.15	\$142.39
500-600 LBS	\$136.26	\$130.19	\$121.31
600-700 LBS	\$134.69	\$131.66	\$109.59
700-800 LBS	\$139.06	\$128.21	\$111.37
800-900 LBS	\$132.78	\$128.34	N/A

### FEEDER HEIFERS:

	M&L 1	M&L 1-2	M&L 2
400-500 LBS	\$131.70	\$122.87	\$114.10
500-600 LBS	\$125.61	\$112.21	\$104.92
600-700 LBS	\$129.43	\$112.68	\$100.99
700-800 LBS	\$127.01	\$117.10	\$96.21
800-900 LBS	\$121.50	\$114.00	N/A

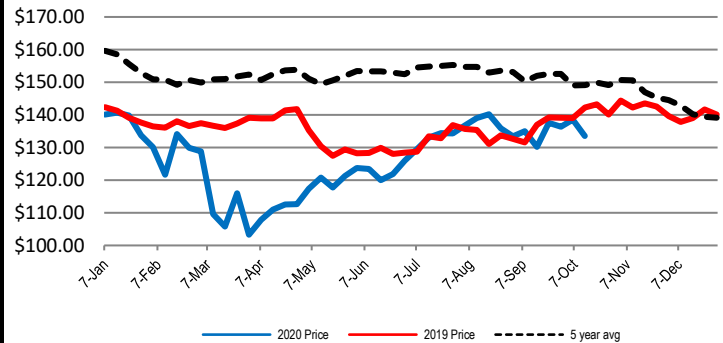
### WEEKLY 600 LB STEER PRICE M&L 1, 1-2, 2

Weekly combined auction & direct sales 500-700 lbs



### WEEKLY 800 LB STEER PRICE M&L 1, 1-2, 2

Weekly combined auction & direct sales 700-900 lbs



### SLAUGHTER COWS

	% Lean	Price Range
Breakers	75-80	\$42.50 - \$57.50
Boners	80-85	\$42.50 - \$55.50
Lean	85-90	\$40.00 - \$53.00

### TEXAS FED CATTLE AVERAGE LIVE WEIGHT

	Avg Live Wt	Slaughter	% Heifers
W/E 10/10/20	1372	117,724	41%
Previous Week	1352	112,679	41%
Same Wk Yr Ago	1326	120,989	42%

### TEXAS WEEKLY REPLACEMENT STOCK

Bred Cows - Young to Aged - Per Head

Weight	Months bred	Price Range
900-1000 lbs	1 to 3	\$610.00 - \$850.00
1000-1100 lbs	4 to 6	N/A - N/A
1100-1200 lbs	4 to 6	\$910.00 - \$1,000.00
1200-1400 lbs	1 to 9	N/A - N/A

Cow/Calf Pairs - Young to Aged

Cows' Weight	Calves' Weight	Price Range
1000-1100 lbs	150-300 lbs	\$910.00 - \$1,025.00
1100-1200 lbs	<150 lbs	\$700.00 - \$850.00
1200-1300 lbs	150-300 lbs	N/A - N/A
1300-1400 lbs	150-300 lbs	N/A - N/A

### ALFALFA

		Panhandle	West	North Central/East	South
SM SQ	Supreme/Premium	\$268.00 DEL	\$267.00 FOB	N/A DEL	N/A FOB
SM SQ	Good/Premium	N/A DEL	N/A FOB	N/A DEL	N/A FOB
LG SQ	Supreme/Premium (Sup)	\$252.00 DEL	\$225.00 FOB	\$227.00 DEL	N/A FOB
LG SQ	Good/Premium (Prem)	\$220.00 DEL	N/A FOB	N/A DEL	N/A FOB
CHOPPED		\$207.00 DEL	N/A	N/A	N/A

### COASTAL BERMUDA

SM SQ	Good/Premium	N/A /b DEL	N/A /b FOB	\$9.00 /b FOB	\$9.00 /b FOB
LG RND	Good/Premium	N/A /r DEL	N/A /r FOB	\$65.00 /r FOB	\$87.00 /r FOB

### TEXAS WEEKLY GRAIN PRICES

(Prices paid or bid to producers - FOB Elevator)

	Sorghum	Wheat	Corn
North of Canadian River	\$4.70	\$5.29	\$4.31
Triangle Area	\$4.46	\$5.22	\$4.42
Plainview to Canyon to Farwell	\$4.46	\$5.22	\$4.42
South From Plainview to Muleshoe	\$4.56	\$5.14	\$4.46

USDA Livestock & Grain Market News  
Amarillo, TX

Phone: (806) 356-5759

Email:

[tess.liles@usda.gov](mailto:tess.liles@usda.gov)

[www.ams.usda.gov/lsmarketnews](http://www.ams.usda.gov/lsmarketnews)