

TEXAS WEEKLY SUMMARY

Week Ending **September 19, 2020**

Receipts: This Week 33,700 Last Week 13,000 Year Ago 39,100

Compared to last week: Yearling steers and heifers sold steady to 3.00 higher. Calves sold with a lower undertone. Trade was active on moderate to good demand. Slaughter cows and bulls sold steady. Hay trades are mostly steady in all regions. In the Texas High Plains grain markets the bulk of bids were 25 to 30 cents higher on grain sorghum; 31 to 33 cents higher on wheat; and 9 to 11 cents higher on corn.

TEXAS WEEKLY FEEDER CATTLE AVERAGES (Combined Direct and Auctions)

Direct

Auctions

FEEDER STEERS:

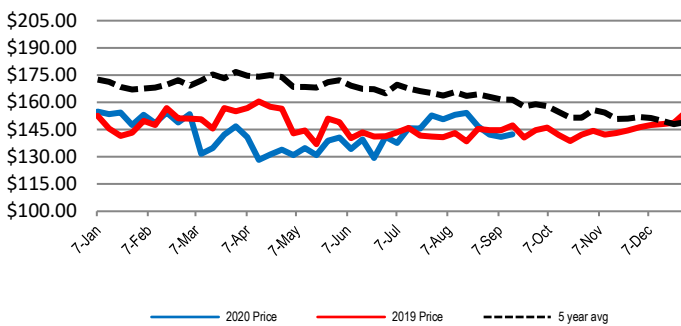
	M&L 1	M&L 1-2	M&L 2
400-500 LBS	\$147.35	\$147.96	\$130.81
500-600 LBS	\$142.96	\$137.84	\$120.51
600-700 LBS	\$143.25	\$138.77	\$122.37
700-800 LBS	\$116.15	\$139.98	\$110.00
800-900 LBS	\$139.88	\$135.40	N/A

FEEDER HEIFERS:

	M&L 1	M&L 1-2	M&L 2
400-500 LBS	\$132.81	\$130.79	\$118.73
500-600 LBS	\$128.19	\$121.00	\$104.90
600-700 LBS	\$135.14	\$119.01	\$105.27
700-800 LBS	\$128.76	\$126.99	\$105.23
800-900 LBS	\$117.59	\$113.40	N/A

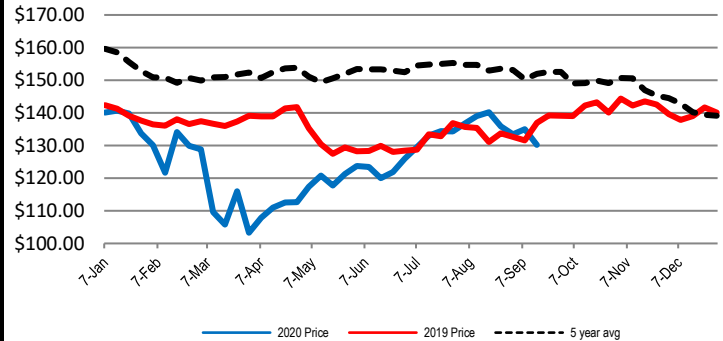
WEEKLY 600 LB STEER PRICE M&L 1, 1-2, 2

Weekly combined auction & direct sales 500-700 lbs



WEEKLY 800 LB STEER PRICE M&L 1, 1-2, 2

Weekly combined auction & direct sales 700-900 lbs



SLAUGHTER COWS

	% Lean	Price Range
Breakers	75-80	\$50.00 - \$58.50
Boners	80-85	\$50.00 - \$63.50
Lean	85-90	\$50.75 - \$64.00

TEXAS FED CATTLE AVERAGE LIVE WEIGHT

	Avg Live Wt	Slaughter	% Heifers
W/E 9/5/20	1342	106,345	42%
Previous Week	1349	120,197	40%
Same Wk Yr Ago	1325	100,435	43%

TEXAS WEEKLY REPLACEMENT STOCK

Bred Cows - Young to Aged - Per Head

Weight	Months bred	Price Range
900-1000 lbs	1 to 3	\$525.00 - \$675.00
1000-1100 lbs	4 to 6	\$750.00 - \$960.00
1100-1200 lbs	4 to 6	N/A - N/A
1200-1400 lbs	1 to 9	N/A - N/A

Cow/Calf Pairs - Young to Aged

Cows' Weight	Calves' Weight	Price Range
1000-1100 lbs	150-300 lbs	\$800.00 - \$1,000.00
1100-1200 lbs	<150 lbs	N/A - N/A
1200-1300 lbs	150-300 lbs	\$900.00 - \$1,000.00
1300-1400 lbs	150-300 lbs	N/A - N/A

ALFALFA

		Panhandle	West	North Central/East	South
SM SQ	Supreme/Premium	\$268.00 DEL	\$267.00 FOB	N/A DEL	N/A FOB
SM SQ	Good/Premium	N/A DEL	N/A FOB	N/A DEL	N/A FOB
LG SQ	Supreme/Premium (Sup)	\$252.00 DEL	\$225.00 FOB	\$227.00 DEL	N/A FOB
LG SQ	Good/Premium (Prem)	\$220.00 DEL	N/A FOB	N/A DEL	N/A FOB
CHOPPED		\$207.00 DEL	N/A	N/A	N/A

COASTAL BERMUDA

SM SQ	Good/Premium	N/A /b DEL	N/A /b FOB	\$9.00 /b FOB	\$9.00 /b FOB
LG RND	Good/Premium	N/A /r DEL	N/A /r FOB	\$65.00 /r FOB	\$87.00 /r FOB

TEXAS WEEKLY GRAIN PRICES

(Prices paid or bid to producers - FOB Elevator)

	Sorghum	Wheat	Corn
North of Canadian River	\$4.34	\$4.77	\$4.06
Triangle Area	\$4.14	\$4.69	\$4.13
Plainview to Canyon to Farwell	\$4.14	\$4.69	\$4.13
South From Plainview to Muleshoe	\$4.28	\$4.59	\$4.20

USDA Livestock & Grain Market News
Amarillo, TX

Phone: (806) 356-5759

Email:

tess.liles@usda.gov

www.ams.usda.gov/lsmarketnews