

TEXAS WEEKLY SUMMARY

Week Ending **September 12, 2020**

Receipts: This Week 13,000 Last Week 14,900 Year Ago 39,000

Compared to last week: Feeder steers and heifers were mostly steady to instances 2.00 higher. Trade activity was light to moderate on moderate demand. A cold front pushed through the area setting record lows and bringing some moisture. Slaughter cows and bulls sold steady. Hay trades are mostly steady in all regions. In the Texas High Plains grain markets the bulk of bids were 9 to 12 cents higher on grain sorghum; 2 cents lower on wheat; and 11 to 12 cents higher on corn.

TEXAS WEEKLY FEEDER CATTLE AVERAGES (Combined Direct and Auctions)

Direct

Auctions

FEEDER STEERS:

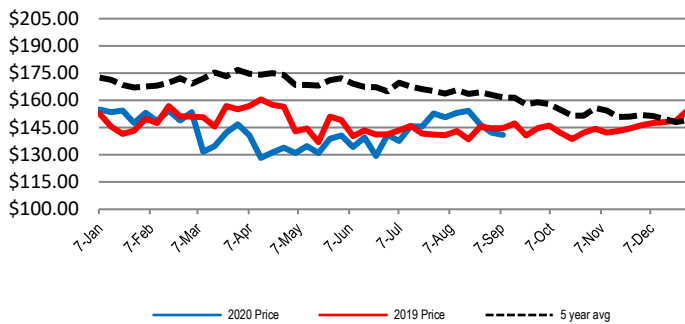
| | M&L 1 | M&L 1-2 | M&L 2 |
|-------------|----------|----------|----------|
| 400-500 LBS | \$150.89 | \$157.47 | \$140.60 |
| 500-600 LBS | \$140.02 | \$137.61 | \$125.56 |
| 600-700 LBS | \$144.24 | \$139.59 | \$119.67 |
| 700-800 LBS | \$137.04 | \$138.14 | \$114.11 |
| 800-900 LBS | \$132.89 | \$121.44 | N/A |

FEEDER HEIFERS:

| | M&L 1 | M&L 1-2 | M&L 2 |
|-------------|----------|----------|----------|
| 400-500 LBS | \$131.12 | \$126.60 | \$121.40 |
| 500-600 LBS | \$125.99 | \$120.64 | \$107.12 |
| 600-700 LBS | \$125.00 | \$114.05 | \$108.00 |
| 700-800 LBS | \$128.22 | \$122.30 | \$89.00 |
| 800-900 LBS | N/A | N/A | \$94.40 |

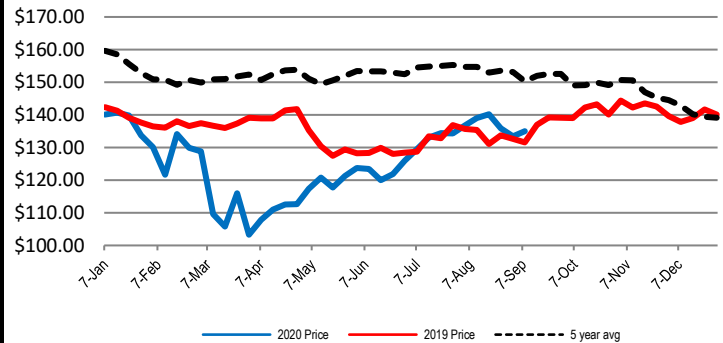
WEEKLY 600 LB STEER PRICE M&L 1, 1-2, 2

Weekly combined auction & direct sales 500-700 lbs



WEEKLY 800 LB STEER PRICE M&L 1, 1-2, 2

Weekly combined auction & direct sales 700-900 lbs



SLAUGHTER COWS

| | % Lean | Price Range |
|----------|--------|-------------------|
| Breakers | 75-80 | \$55.00 - \$55.00 |
| Boners | 80-85 | \$55.00 - \$66.50 |
| Lean | 85-90 | \$48.00 - \$65.00 |

TEXAS FED CATTLE AVERAGE LIVE WEIGHT

| | Avg Live Wt | Slaughter | % Heifers |
|----------------|-------------|-----------|-----------|
| W/E 9/5/20 | 1342 | 106,345 | 42% |
| Previous Week | 1349 | 120,197 | 40% |
| Same Wk Yr Ago | 1325 | 100,435 | 43% |

TEXAS WEEKLY REPLACEMENT STOCK

Bred Cows - Young to Aged - Per Head

| Weight | Months bred | Price Range |
|---------------|-------------|-------------------------|
| 900-1000 lbs | 1 to 3 | \$700.00 - \$800.00 |
| 1000-1100 lbs | 4 to 6 | \$800.00 - \$1,025.00 |
| 1100-1200 lbs | 4 to 6 | \$1,000.00 - \$1,200.00 |
| 1200-1400 lbs | 1 to 9 | N/A - N/A |

Cow/Calf Pairs - Young to Aged

| Cows' Weight | Calves' Weight | Price Range |
|---------------|----------------|-------------------------|
| 1000-1100 lbs | 150-300 lbs | \$1,100.00 - \$1,175.00 |
| 1100-1200 lbs | <150 lbs | N/A - N/A |
| 1200-1300 lbs | 150-300 lbs | \$1,225.00 - \$1,350.00 |
| 1300-1400 lbs | 150-300 lbs | N/A - N/A |

ALFALFA

| | | Panhandle | West | North Central/East | South |
|---------|-----------------------|--------------|--------------|--------------------|---------|
| SM SQ | Supreme/Premium | \$268.00 DEL | \$267.00 FOB | N/A DEL | N/A FOB |
| SM SQ | Good/Premium | N/A DEL | N/A FOB | N/A DEL | N/A FOB |
| LG SQ | Supreme/Premium (Sup) | \$252.00 DEL | \$225.00 FOB | \$227.00 DEL | N/A FOB |
| LG SQ | Good/Premium (Prem) | \$220.00 DEL | N/A FOB | N/A DEL | N/A FOB |
| CHOPPED | | \$207.00 DEL | N/A | N/A | N/A |

COASTAL BERMUDA

| | | | | | |
|--------|--------------|------------|------------|----------------|----------------|
| SM SQ | Good/Premium | N/A /b DEL | N/A /b FOB | \$9.00 /b FOB | \$9.00 /b FOB |
| LG RND | Good/Premium | N/A /r DEL | N/A /r FOB | \$65.00 /r FOB | \$87.00 /r FOB |

TEXAS WEEKLY GRAIN PRICES

(Prices paid or bid to producers - FOB Elevator)

| | Sorghum | Wheat | Corn |
|----------------------------------|---------|--------|--------|
| North of Canadian River | \$4.04 | \$4.46 | \$3.94 |
| Triangle Area | \$3.89 | \$4.38 | \$4.02 |
| Plainview to Canyon to Farwell | \$3.89 | \$4.38 | \$4.02 |
| South From Plainview to Muleshoe | \$3.98 | \$4.26 | \$4.10 |

USDA Livestock & Grain Market News
Amarillo, TX

Phone: (806) 356-5759

Email:

tess.liles@usda.gov

www.ams.usda.gov/lsmarketnews