

KANSAS WEEKLY MARKET RECAP

Recap For Week Ending

July 18, 2025

Receipts: This Week: 4,054 Week Ago: 4,357 Year Ago: 3,872

Compared to last week, steers and heifers traded 5.00 to 12.00 higher where comparisons could be made. Demand was good on light to moderate supply. Slaughter cows sold steady while slaughter bulls sold steady to 4.00 higher. In the feedlot trade, negotiated live slaes in Kansas sold steady to 1.00 higher at 230.00 to 231.00. In the hay market, demand was light, trade was moderate, and prices were steady, on limited test as producers have been busy in the fields. Hot, muggy and humid weather seems to be the current trend, with the southwest continuing to receive rain. This is great for corn but hard on the hay producer. According to the U.S. Drought Monitor for the week of July 8th, another round of heavy rainfall (1 to 2 inches, locally more) supported a 1-category improvement to parts of the Northern and Central Great Plains. Eastern Kansas has missed out on the heavy rainfall recently and abnormal dryness (D0) was added to that part of the state.

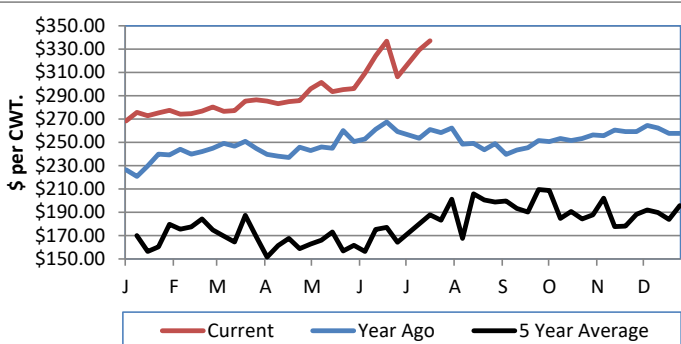
KANSAS WEEKLY FEEDER CATTLE AVERAGES

[Cattle Auction Summary](#)

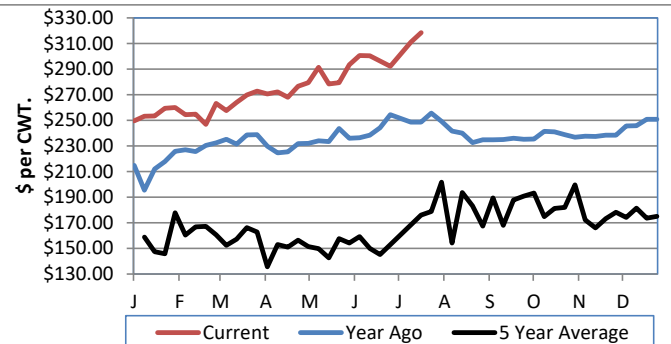
| Feeder Steers: | This Week | Last Week | Year Ago |
|----------------|-----------|-----------|----------|
| M&L 1 | | | |
| 400-500 lbs. | \$448.79 | \$416.46 | \$355.22 |
| 500-600 lbs. | \$417.75 | \$408.71 | \$331.41 |
| 600-700 lbs. | \$385.69 | \$375.04 | \$304.26 |
| 700-800 lbs. | \$357.49 | \$346.26 | \$273.10 |
| 800-900 lbs. | \$323.09 | \$323.07 | \$250.02 |
| 900-1000 lbs. | \$320.83 | \$308.14 | \$234.15 |

| Feeder Heifers | This Week | Last Week | Year Ago |
|----------------|-----------|-----------|----------|
| M&L 1 | | | |
| 400-500 lbs. | \$400.08 | \$406.42 | \$303.67 |
| 500-600 lbs. | \$381.84 | \$369.62 | \$290.42 |
| 600-700 lbs. | \$350.63 | \$328.34 | \$266.42 |
| 700-800 lbs. | \$318.47 | \$311.04 | \$248.65 |
| 800-900 lbs. | \$300.39 | \$301.59 | \$229.46 |
| 900-1000 lbs. | \$274.67 | \$284.06 | \$226.39 |

Weekly M&L 1 700-900 lb. Feeder Steer Price



Weekly M&L 1 700-800 lb. Feeder Heifer Price



KANSAS DIRECT FEEDER CATTLE

[Fdr Cattle Direct Summary](#)

Medium and Large 1 (Current FOB)

| | Steers | Heifers |
|--------------|---------------|---------------|
| 600-700 lbs. | NQ | NQ |
| 700-800 lbs. | 322.37-338.50 | 305.37-310.00 |
| 800-900 lbs. | 313.45 | NQ |

KANSAS WEEKLY GRAIN BIDS

[Kansas Grain Bids](#)

| | Terminal Elevators | Country Elevators |
|--|--------------------|-------------------|
| US NO 1 HR Winter Wheat | 5.0325-5.5325 | 4.7325-4.9825 |
| US NO 2 Yellow Corn | 3.8075-4.3675 | 3.8875-4.3375 |
| US NO 2 Sorghum | 3.2875-3.3875 | 3.0875-3.5375 |
| US NO 2 Soybeans | 9.8575-10.5100 | 9.2875-9.9800 |
| Sunflower - Oilseeds (country elevators) | | NQ |
| Cotton - West Texas | | 62.87 |

KANSAS WEEKLY SLAUGHTER CATTLE

[Cattle Auction Summary](#)

Slaughter Cows

| | Average | High | Low |
|------------|---------|------|--------|
| Dressing | | | |
| Prem White | NQ | NQ | NQ |
| Breakers | 162.63 | NQ | NQ |
| Boners | 167.94 | NQ | 148.96 |
| Lean | NQ | NQ | 142.74 |

Slaughter Bulls

| | Average | High | Low |
|--------|---------|--------|--------|
| YG 1-2 | 194.57 | 208.00 | 170.61 |

KANSAS WEEKLY ETHANOL BIDS

[Ethanol Summary](#)

| | |
|--------------|-------------|
| DDG | 135.00 |
| Modified Wet | NQ |
| Wet | 30.00-53.00 |

KANSAS WEEKLY HAY PRICES

[Kansas Hay](#)

| | Southwest KS | South Central KS |
|--------------------|---------------|------------------|
| Alfalfa (Dairy) | | |
| Supreme | NQ | 200.00-220.00 |
| Premium | NQ | 100.00 |
| Ground & Delivered | 150.00-170.00 | 130.00-152.00 |

KANSAS WEEKLY WTD AVG

[KS WEEKLY SLAUGHTER CATTLE](#)

SLAUGHTER CATTLE REPORT

| | This Week | Last Week | Last Year |
|-------------|-----------|-----------|-----------|
| Live Str | \$230.65 | \$229.68 | \$188.00 |
| Live Hfr | \$231.61 | \$228.90 | \$188.16 |
| Dressed Str | \$376.00 | \$380.00 | \$309.19 |
| Dressed Hfr | \$380.00 | NQ | NQ |

USDA Livestock Poultry and Grain Market News

St Joseph, MO

Phone: (816) 676-7000

Email: stjoe.lpgmn@usda.gov

<http://www.ams.usda.gov/lpsmarketnewspage>