

# KANSAS WEEKLY MARKET RECAP

Recap For Week Ending: **November 20, 2020**

**Receipts:** This Week: 12,720      Week Ago: 12,859      Year Ago: 11,782

Compared to last week: Feeder steers unevenly steady to 10.00 lower, instances 1.00 to 6.00 higher on 450 to 550 lbs and few 800 to 900 lbs 1.00 higher. Heifers bulk of the trade unevenly steady to 9.00 lower, except under 600 lbs 3.00 to 7.00 higher; few 775 to 900 lbs sold 1.00 higher; on a limited test over 950 lbs 6.00 higher. Slaughter cows steady to 4.00 lower. Slaughter bulls uneven, 3.00 to 10.00 lower. Direct feeder steers and heifers, too few Current FOB trades for an accurate test, but a slightly higher undertone was noted. For the week live purchases traded steady at 110.00.

## KANSAS WEEKLY FEEDER CATTLE AVERAGES

[Cattle Auction Summary](#)

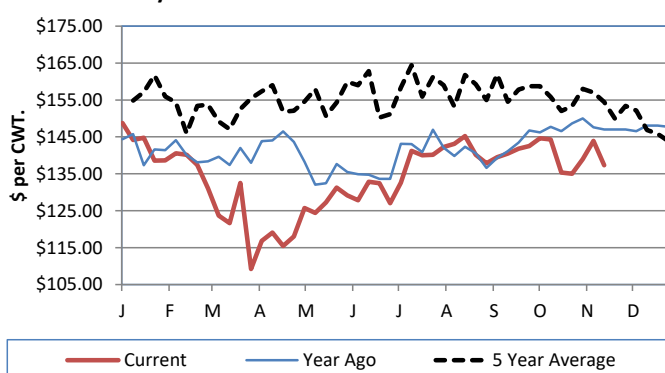
### Feeder Steers (M&L 1)

	This Week	Last Week	Year Ago
400-500 lbs.	\$177.71	\$177.53	\$172.69
500-600 lbs.	\$157.91	\$157.26	\$157.62
600-700 lbs.	\$143.48	\$147.07	\$147.37
700-800 lbs.	\$137.80	\$145.85	\$148.55
800-900 lbs.	\$136.98	\$141.87	\$145.75
900-1000 lbs.	\$134.31	\$137.31	\$141.31

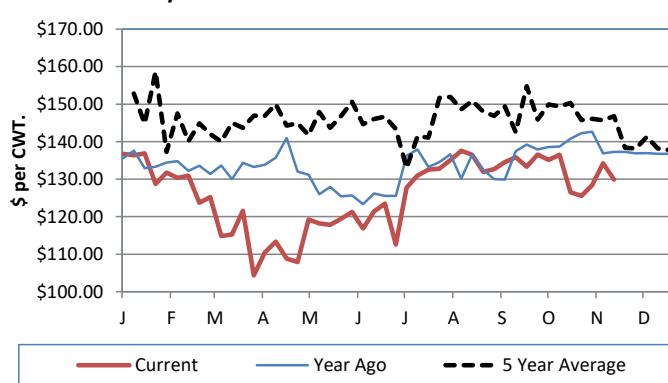
### Feeder Heifers (M&L 1)

	This Week	Last Week	Year Ago
400-500 lbs.	\$147.41	\$149.83	\$153.79
500-600 lbs.	\$138.09	\$143.93	\$139.46
600-700 lbs.	\$128.68	\$135.47	\$137.70
700-800 lbs.	\$129.88	\$134.23	\$137.28
800-900 lbs.	\$126.75	\$131.25	\$136.24
900-1000 lbs.	\$120.79	\$109.62	\$127.90

Weekly M&L 1 700-900 lb. Feeder Steer Price



Weekly M&L 1 700-800 lb. Feeder Heifer Price



## KANSAS DIRECT FEEDER CATTLE

[DC LS165](#)

(Current FOB)

	Steers	Heifers
600-700 lbs.	NQ	NQ
700-800 lbs.	NQ	127.45
800-900 lbs.	134.08	128.45

## KANSAS WEEKLY GRAIN BIDS

[Kansas Grain Bids](#)

	Terminal Elevators	Country Elevators
US NO 1 HR Winter Wheat	5.0875-5.43	5.0375-5.30
US NO 2 Yellow Corn	3.9425-4.3075	4.2625-4.6075
US NO 2 Sorghum	5.3125-5.8075	5.1625-5.6075
US NO 2 Soybeans	10.915-11.51	10.335-11.11
Sunflower - Oilseeds (Goodland)		18.65
Cotton - West Texas		67.46

## KANSAS WEEKLY SLAUGHTER CATTLE

[Cattle Auction Summary](#)

Slaughter Cows

	Average	High	Low
Prem White	NQ	NQ	NQ
Breakers	59.14	67.35	NQ
Boners	49.71	NQ	NQ
Lean	41.96	35.66	NQ

Slaughter Bulls

	Average	High	Low
YG 1-2	67.01	74.82	56.69

## KANSAS WEEKLY ETHANOL BIDS

[Ethanol Summary](#)

DDG	170.00-210.00
Modified Wet	NQ
Wet	50.00-70.00

## KANSAS WEEKLY HAY PRICES

[Kansas Hay](#)

	Southwest KS	South Central KS
<b>Alfalfa (Dairy)</b>		
Supreme	190.00-210.00	210
Premium	189	175.00-180.00
Ground & Delivered	145.00-175.00	135.00-175.00

## KANSAS WEEKLY WTD AVG

[AMS 2484](#)

### SLAUGHTER CATTLE REPORT

	This Week	Last Week	Last Year
Live Str	\$109.93	\$110.01	\$115.97
Live Hfr	\$109.86	\$110.05	\$115.98
Dressed Str	\$172.00	\$172.80	\$184.00
Dressed Hfr	\$172.00	\$172.00	NQ

## USDA Livestock Poultry and Grain Market News

Dodge City, KS

Phone: (620) 227-8881

Email: [dodgecity.lpgmn@usda.gov](mailto:dodgecity.lpgmn@usda.gov)

<http://www.ams.usda.gov/lpsmarketnewspage>