

KANSAS WEEKLY MARKET RECAP

Recap For Week Ending: **November 13, 2020**

Receipts: This Week: 10,153 Week Ago: 5,977 Year Ago: 16,930

Compared to last week: Feeder steers sold steady to 11.00 higher, except few under 650 lbs 1.00 to 5.00 lower. Heifers sold steady to 11.00 higher, except few 900 lbs 3.00 lower. Slaughter cows and bulls uneven, 2.00 higher to 2.00 lower. Direct feeder steers and heifers, too few Current FOB trades to trend from last week, but a higher undertone was noted. For the week live purchases traded mostly 3.00 higher at 110.00.

KANSAS WEEKLY FEEDER CATTLE AVERAGES

[Cattle Auction Summary](#)

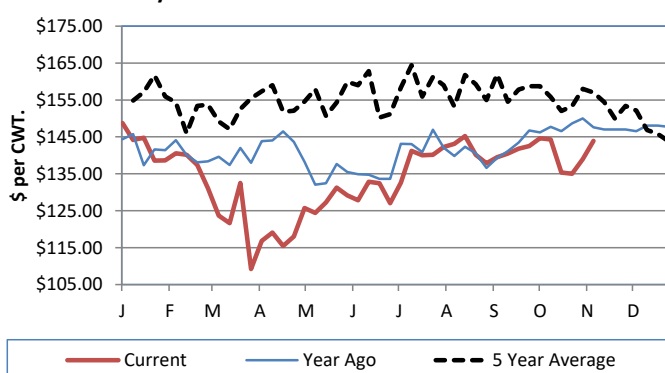
Feeder Steers (M&L 1)

	This Week	Last Week	Year Ago
400-500 lbs.	\$177.53	\$169.40	\$174.36
500-600 lbs.	\$157.26	\$153.95	\$158.82
600-700 lbs.	\$147.07	\$142.09	\$151.71
700-800 lbs.	\$145.85	\$137.78	\$148.33
800-900 lbs.	\$141.87	\$140.15	\$146.94
900-1000 lbs.	\$137.31	\$133.83	\$140.04

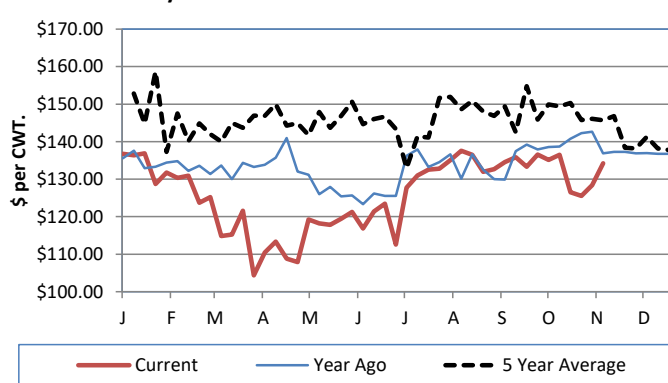
Feeder Heifers (M&L 1)

	This Week	Last Week	Year Ago
400-500 lbs.	\$149.83	\$146.74	\$150.35
500-600 lbs.	\$143.93	\$135.90	\$144.89
600-700 lbs.	\$135.47	\$131.17	\$141.22
700-800 lbs.	\$134.23	\$128.42	\$136.88
800-900 lbs.	\$131.25	\$122.89	\$138.05
900-1000 lbs.	\$109.62	\$116.93	\$131.17

Weekly M&L 1 700-900 lb. Feeder Steer Price



Weekly M&L 1 700-800 lb. Feeder Heifer Price



KANSAS DIRECT FEEDER CATTLE

[DC LS165](#)

(Current FOB)

	Steers	Heifers
600-700 lbs.	NQ	135.15-135.40
700-800 lbs.	139.20-143.00	130.05-134.70
800-900 lbs.	134.50	129.00-130.35

KANSAS WEEKLY GRAIN BIDS

[Kansas Grain Bids](#)

	Terminal Elevators	Country Elevators
US NO 1 HR Winter Wheat	5.04-5.465	4.99-5.315
US NO 2 Yellow Corn	3.855-4.28	4.175-4.58
US NO 2 Sorghum	5.175-5.78	5.025-5.53
US NO 2 Soybeans	10.455-11.16	9.905-10.78
Sunflower - Oilseeds (Goodland)		18.85
Cotton - West Texas		63.46

KANSAS WEEKLY SLAUGHTER CATTLE

[Cattle Auction Summary](#)

Slaughter Cows

	Average	High	Low
Prem White	NQ	NQ	NQ
Breakers	62.79	67.60	NQ
Boners	52.17	61.44	NQ
Lean	44.66	32.91	NQ

Slaughter Bulls

	Average	High	Low
YG 1-2	74.38	80.05	63.09

KANSAS WEEKLY ETHANOL BIDS

[Ethanol Summary](#)

DDG	170.00-210.00
Modified Wet	NQ
Wet	50.00-70.00

KANSAS WEEKLY HAY PRICES

[Kansas Hay](#)

	Southwest KS	South Central KS
Alfalfa (Dairy)		
Supreme	190.00-210.00	210
Premium	189	175.00-180.00
Ground & Delivered	145.00-175.00	135.00-175.00

KANSAS WEEKLY WTD AVG

[AMS 2484](#)

SLAUGHTER CATTLE REPORT

	This Week	Last Week	Last Year
Live Str	\$110.01	\$107.00	\$114.98
Live Hfr	\$110.05	\$106.99	\$115.00
Dressed Str	\$172.80	NQ	\$182.42
Dressed Hfr	\$172.00	NQ	NQ

USDA Livestock Poultry and Grain Market News

Dodge City, KS

Phone: (620) 227-8881

Email: dodgecity.lpgmn@usda.gov

<http://www.ams.usda.gov/lpsmarketnewspage>