

# KANSAS WEEKLY MARKET RECAP

Recap For Week Ending: **September 25, 2020**

**Receipts:** This Week: 6,003      Week Ago: 6,781      Year Ago: 8,443

Compared to last week: Feeder steers mostly steady to 4.00 higher, instances 2.00 to 3.00 lower on 500 to 975 lbs. Heifers uneven, mostly 2.00 to 5.00 lower, instances 2.00 to 4.00 higher. Slaughter cows steady to 3.00 lower. Slaughter bulls 5.00 to 7.00 lower. Direct feeder steers and heifers, very limited comparable Current FOB receipts, but a steady undertone was noted. For the week, live purchases moved 2.00 higher at 105.00.

## KANSAS WEEKLY FEEDER CATTLE AVERAGES

[Cattle Auction Summary](#)

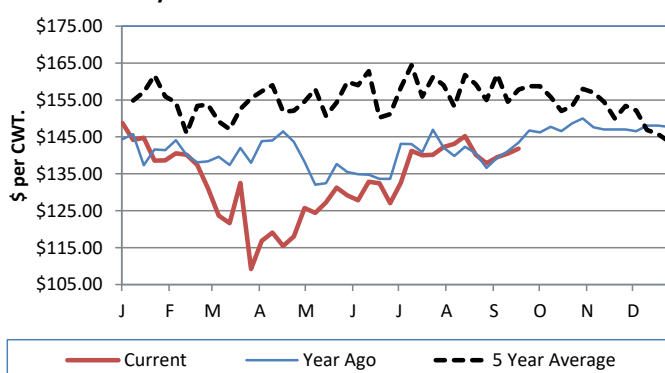
### Feeder Steers (M&L 1)

	This Week	Last Week	Year Ago
400-500 lbs.	\$166.11	\$171.50	\$180.63
500-600 lbs.	\$157.37	\$157.01	\$162.21
600-700 lbs.	\$147.65	\$150.92	\$156.36
700-800 lbs.	\$143.85	\$141.67	\$146.91
800-900 lbs.	\$139.61	\$140.11	\$141.33
900-1000 lbs.	\$135.34	\$137.19	\$135.24

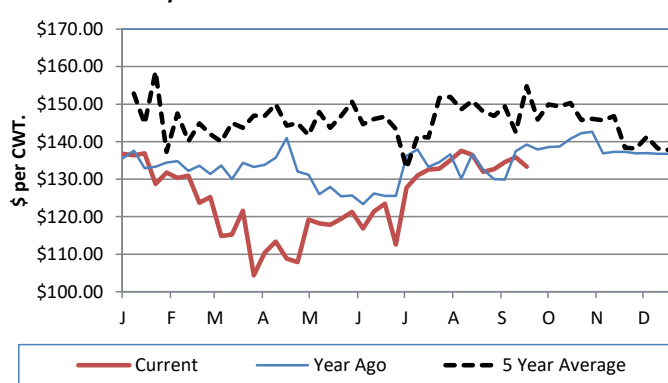
### Feeder Heifers (M&L 1)

	This Week	Last Week	Year Ago
400-500 lbs.	\$148.13	\$154.04	\$154.98
500-600 lbs.	\$140.81	\$143.08	\$143.03
600-700 lbs.	\$139.87	\$139.02	\$142.78
700-800 lbs.	\$133.30	\$135.87	\$139.21
800-900 lbs.	\$128.28	\$129.83	\$131.86
900-1000 lbs.	\$123.75	\$124.07	\$120.17

Weekly M&L 1 700-900 lb. Feeder Steer Price



Weekly M&L 1 700-800 lb. Feeder Heifer Price



## KANSAS DIRECT FEEDER CATTLE

[DC LS165](#)

(Current FOB)

	Steers	Heifers
600-700 lbs.	NQ	140.70-140.90
700-800 lbs.	NQ	NQ
800-900 lbs.	NQ	125.20

## KANSAS WEEKLY GRAIN BIDS

[Kansas Grain Bids](#)

	Terminal Elevators	Country Elevators
US NO 1 HR Winter Wheat	4.3525-4.7575	4.3025-4.6175
US NO 2 Yellow Corn	3.355-3.6475	3.435-3.9975
US NO 2 Sorghum	4.195-4.5175	3.935-4.3025
US NO 2 Soybeans	9.15-9.695	8.80-9.2975
Sunflower - Oilseeds (Goodland)		17.25
Cotton - West Texas		58.95

## KANSAS WEEKLY SLAUGHTER CATTLE

[Cattle Auction Summary](#)

Slaughter Cows

	Average	High	Low
Prem White	NQ	NQ	NQ
Breakers	63.36	68.95	NQ
Boners	56.32	NQ	NQ
Lean	49.43	NQ	NQ

Slaughter Bulls

	Average	High	Low
YG 1-2	79.86	83.73	NQ

## KANSAS WEEKLY ETHANOL BIDS

[Ethanol Summary](#)

DDG	125.00-173.00
Modified Wet	NQ
Wet	40.00-63.00

## KANSAS WEEKLY HAY PRICES

[Kansas Hay](#)

	Southwest KS	South Central KS
<b>Alfalfa (Dairy)</b>		
Supreme	190.00-200.00	210
Premium	180	NQ
Ground & Delivered	135.00-170.00	135.00-155.00

## KANSAS WEEKLY WTD AVG

[AMS 2484](#)

### SLAUGHTER CATTLE REPORT

	This Week	Last Week	Last Year
Live Str	\$104.95	\$103.11	\$103.68
Live Hfr	\$104.91	\$103.14	\$103.62
Dressed Str	\$165.00	\$163.00	\$164.58
Dressed Hfr	\$164.23	NQ	NQ

## USDA Livestock Poultry and Grain Market News

Dodge City, KS

Phone: (620) 227-8881

Email: [dodgecity.lpgmn@usda.gov](mailto:dodgecity.lpgmn@usda.gov)

<http://www.ams.usda.gov/lpsmarketnewspage>