

KANSAS WEEKLY MARKET RECAP

Recap For Week Ending: **October 16, 2020**

Receipts: This Week: 6,964 Week Ago: 6,072 Year Ago: 8,226

Compared to last week: Feeder steers mostly unevenly steady to 2.00 higher, few up to 3.00 higher on 650 to 700 lbs; over 700 lbs instances steady to 2.00 lower. Heifers unevenly steady, few 700 to 800 lbs 4.00 higher; over 800 lbs mostly 4.00 to 6.00 lower. Slaughter cows steady to 5.00 higher, except few Boner and Lean 6.00 lower. Slaughter bulls steady to 5.00 lower. Direct feeder steers and heifers, too few Current FOB trades for a trend. For the week live purchases moved 1.00 lower at 108.00.

KANSAS WEEKLY FEEDER CATTLE AVERAGES

[Cattle Auction Summary](#)

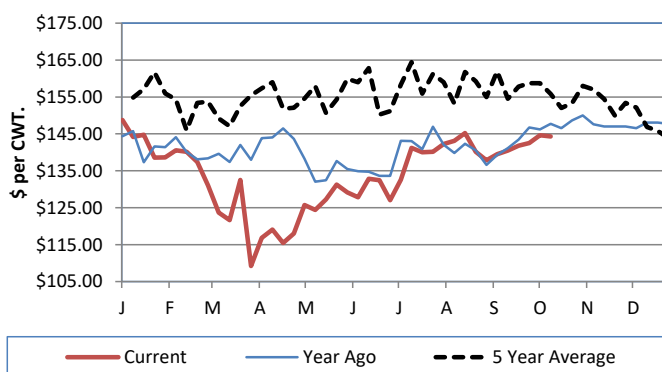
Feeder Steers (M&L 1)

	<u>This Week</u>	<u>Last Week</u>	<u>Year Ago</u>
400-500 lbs.	\$164.10	\$161.97	\$168.02
500-600 lbs.	\$151.25	\$152.68	\$156.59
600-700 lbs.	\$140.88	\$146.78	\$150.42
700-800 lbs.	\$145.30	\$145.37	\$149.65
800-900 lbs.	\$143.61	\$144.33	\$146.65
900-1000 lbs.	\$140.96	\$138.88	\$144.43

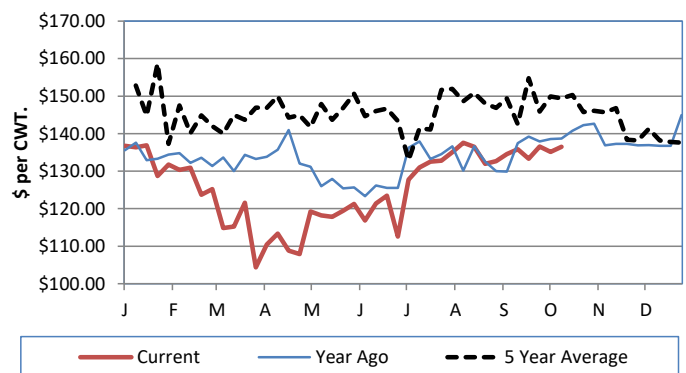
Feeder Heifers (M&L 1)

	<u>This Week</u>	<u>Last Week</u>	<u>Year Ago</u>
400-500 lbs.	\$144.32	\$142.99	\$147.20
500-600 lbs.	\$136.03	\$137.02	\$146.04
600-700 lbs.	\$134.37	\$137.91	\$141.20
700-800 lbs.	\$136.48	\$135.16	\$138.70
800-900 lbs.	\$131.33	\$132.39	\$133.90
900-1000 lbs.	\$115.69	\$121.83	NQ

Weekly M&L 1 700-900 lb. Feeder Steer Price



Weekly M&L 1 700-800 lb. Feeder Heifer Price



KANSAS DIRECT FEEDER CATTLE

[DC LS165](#)

(Current FOB)

	<u>Steers</u>	<u>Heifers</u>
600-700 lbs.	NQ	130.00
700-800 lbs.	NQ	NQ
800-900 lbs.	NQ	NQ

KANSAS WEEKLY GRAIN BIDS

[Kansas Grain Bids](#)

	<u>Terminal Elevators</u>	<u>Country Elevators</u>
US NO 1 HR Winter Wheat	4.9125-5.4275	4.8625-5.2875
US NO 2 Yellow Corn	3.5825-4.0875	3.9125-4.3375
US NO 2 Sorghum	4.7425-5.1375	4.2125-5.0375
US NO 2 Soybeans	9.73-10.1225	9.24-9.8225
Sunflower - Oilseeds (Goodland)		18.50
Cotton - West Texas		63.42

KANSAS WEEKLY SLAUGHTER CATTLE

[Cattle Auction Summary](#)

Slaughter Cows

	<u>Average</u>	<u>High</u>	<u>Low</u>
Prem White	NQ	NQ	NQ
Breakers	61.84	70.69	NQ
Boners	49.83	NQ	NQ
Lean	44.53	NQ	NQ

Slaughter Bulls

	<u>Average</u>	<u>High</u>	<u>Low</u>
YG 1-2	69.55	77.24	NQ

KANSAS WEEKLY ETHANOL BIDS

[Ethanol Summary](#)

DDG	160.00-205.00
Modified Wet	NQ
Wet	43.00-70.00

KANSAS WEEKLY HAY PRICES

[Kansas Hay](#)

	<u>Southwest KS</u>	<u>South Central KS</u>
Alfalfa (Dairy)		
Supreme	190.00-200.00	210
Premium	185	180
Ground & Delivered	150.00-170.00	135.00-160.00

KANSAS WEEKLY WTD AVG

[AMS 2484](#)

SLAUGHTER CATTLE REPORT

	<u>This Week</u>	<u>Last Week</u>	<u>Last Year</u>
Live Str	\$107.76	\$108.54	\$108.00
Live Hfr	\$108.00	\$108.89	\$108.00
Dressed Str	\$168.82	\$170.00	\$173.00
Dressed Hfr	NQ	\$170.00	NQ

USDA Livestock Poultry and Grain Market News

Dodge City, KS

Phone: (620) 227-8881

Email: dodgecity.lpgmn@usda.gov

<http://www.ams.usda.gov/lpsmarketnewspage>