

Receipts: This Week: 7,169 Week Ago: 7,807 Year Ago: 11,099

Compared to last week, steers under 900 lbs sold steady to 3.00 higher, while those over 900 lbs sold 3.00 to 4.00 lower. Heifers under 600 lbs sold steady to 2.00 lower, while those over 600 lbs sold 2.00 to 4.00 higher. Slaughter cows sold uneven; Breakers and Boners sold 3.00 to 4.00 higher, while Leans sold steady to 1.00 higher. Slaughter bulls sold 2.00 to 3.00 higher. Demand was good. Compared to last week, fed slaughter steers and heifers in the feedyards sold steady at 124.00. Hay market prices remain steady for alfalfa and grass hay while trades picked up a bit.

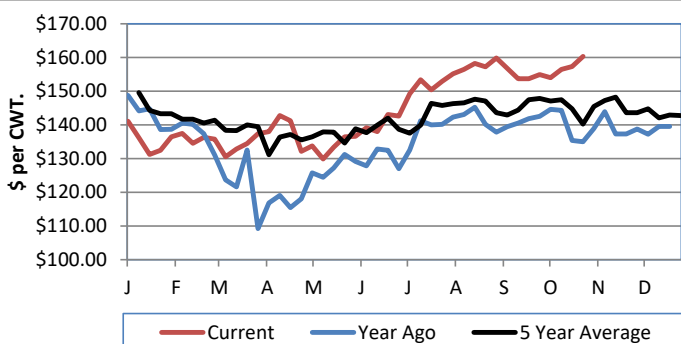
KANSAS WEEKLY FEEDER CATTLE AVERAGES

[Cattle Auction Summary](#)

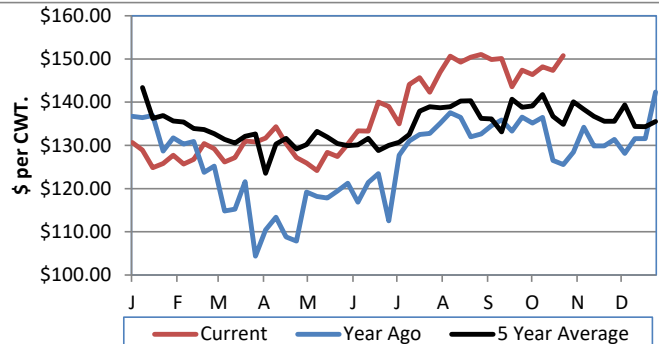
Feeder Steers:	This Week	Last Week	Year Ago
M&L 1			
400-500 lbs.	\$182.90	\$174.64	\$156.17
500-600 lbs.	\$167.95	\$168.19	\$145.78
600-700 lbs.	\$155.33	\$154.26	\$138.27
700-800 lbs.	\$160.69	\$158.08	\$134.76
800-900 lbs.	\$160.09	\$156.99	\$135.74
900-1000 lbs.	\$147.83	\$151.73	\$129.92

Feeder Heifers	This Week	Last Week	Year Ago
M&L 1			
400-500 lbs.	\$151.49	\$149.04	\$143.66
500-600 lbs.	\$145.26	\$146.60	\$135.56
600-700 lbs.	\$152.35	\$143.89	\$125.99
700-800 lbs.	\$150.80	\$147.38	\$126.53
800-900 lbs.	\$144.57	\$138.78	\$122.99
900-1000 lbs.	\$132.16	\$127.79	\$111.38

Weekly M&L 1 700-900 lb. Feeder Steer Price



Weekly M&L 1 700-800 lb. Feeder Heifer Price



KANSAS DIRECT FEEDER CATTLE

[Fdr Cattle Direct Summary](#)

Medium and Large 1 (Current FOB)

	Steers	Heifers
600-700 lbs.	NQ	NQ
700-800 lbs.	159.00	149.00
800-900 lbs.	149.44-152.25	NQ

KANSAS WEEKLY GRAIN BIDS

[Kansas Grain Bids](#)

	Terminal Elevators	Country Elevators
US NO 1 HR Winter Wheat	7.0400-7.7900	6.9275-7.7400
US NO 2 Yellow Corn	5.0325-5.6425	5.2525-5.7600
US NO 2 Sorghum	5.1975-5.6925	5.2025-5.4925
US NO 2 Soybeans	11.6150-12.1550	11.3550-11.8050
Sunflower - Oilseeds (country elevators)		NQ
Cotton - West Texas		105.01

KANSAS WEEKLY SLAUGHTER CATTLE

[Cattle Auction Summary](#)

Slaughter Cows

Dressing	Average	High	Low
Prem White	NQ	NQ	NQ
Breakers	70.66	78.12	NQ
Boners	63.36	NQ	NQ
Lean	52.92	NQ	NQ

Slaughter Bulls

	Average	High	Low
YG 1-2	84.15	91.88	73.58

KANSAS WEEKLY ETHANOL BIDS

[Ethanol Summary](#)

DDG	215.00-255.00
Modified Wet	NQ
Wet	78.00-95.00

KANSAS WEEKLY HAY PRICES

[Kansas Hay](#)

	Southwest KS	South Central KS
Alfalfa (Dairy)		
Supreme	210.00-230.00	220.00-229.00
Premium	NQ	NQ
Ground & Delivered	195.00-210.00	185.00-205.00

KANSAS WEEKLY WTD AVG SLAUGHTER CATTLE REPORT

[KS WEEKLY SLAUGHTER CATTLE](#)

	This Week	Last Week	Last Year
Live Str	\$124.18	\$123.96	\$105.90
Live Hfr	\$124.00	\$124.05	\$105.95
Dressed Str	\$196.50	\$196.00	NQ
Dressed Hfr	NQ	NQ	NQ

USDA Livestock Poultry and Grain Market News

St Joseph, MO

Phone: (816) 676-7000

Email: stjoe.lpgmn@usda.gov

<http://www.ams.usda.gov/lpsmarketnewspage>