

KANSAS WEEKLY MARKET RECAP

Recap For Week Ending: **October 23, 2020**

Receipts: This Week: 11,099 Week Ago: 6,964 Year Ago: 12,743

Compared to last week: Feeder steers sold 3.00 to 8.00 lower, instances 10.00 lower, except few 600 to 650 lbs 4.00 higher. Heifers 600 to 950 lbs 2.00 to 8.00 lower, instances 10.00 lower; under 600 lbs unevenly steady to lower market. Slaughter cows unevenly steady to 2.00 higher, except few Lean 2.00 lower. Slaughter bulls unevenly steady to 2.00 higher. Direct feeder steers and heifers, too few Current FOB trades to trend from last week. For the week live purchases traded 2.00 lower at 106.00.

KANSAS WEEKLY FEEDER CATTLE AVERAGES

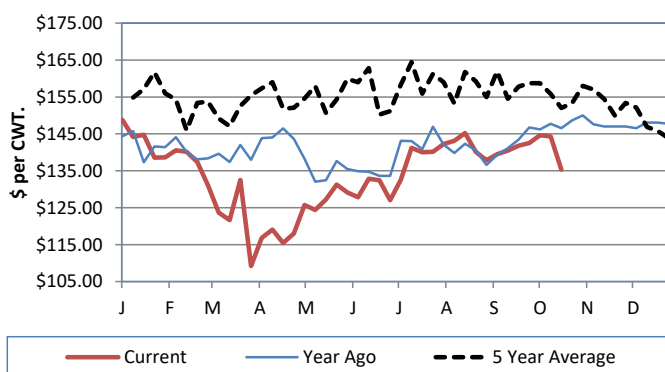
[Cattle Auction Summary](#)

Feeder Steers (M&L 1)

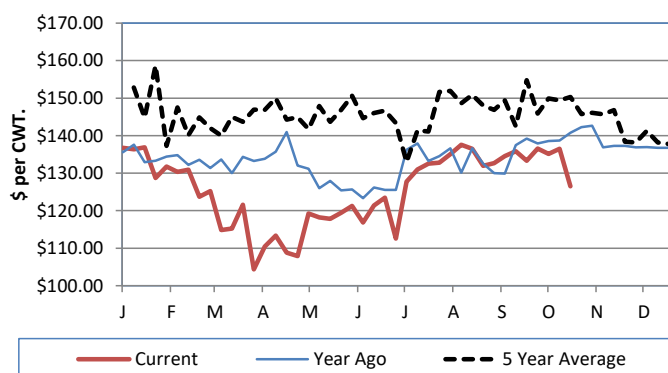
Feeder Heifers (M&L 1)

	<u>This Week</u>	<u>Last Week</u>	<u>Year Ago</u>		<u>This Week</u>	<u>Last Week</u>	<u>Year Ago</u>
400-500 lbs.	\$156.17	\$164.10	\$172.43	400-500 lbs.	\$143.66	\$144.32	\$145.23
500-600 lbs.	\$145.78	\$151.25	\$160.03	500-600 lbs.	\$135.56	\$136.03	\$140.86
600-700 lbs.	\$138.27	\$140.88	\$149.15	600-700 lbs.	\$125.99	\$134.37	\$137.40
700-800 lbs.	\$134.76	\$145.30	\$150.94	700-800 lbs.	\$126.53	\$136.48	\$140.75
800-900 lbs.	\$135.74	\$143.61	\$144.10	800-900 lbs.	\$122.99	\$131.33	\$131.13
900-1000 lbs.	\$129.92	\$140.96	\$145.26	900-1000 lbs.	\$111.38	\$115.69	\$128.26

Weekly M&L 1 700-900 lb. Feeder Steer Price



Weekly M&L 1 700-800 lb. Feeder Heifer Price



KANSAS DIRECT FEEDER CATTLE

[DC LS165](#)

(Current FOB)

	<u>Steers</u>	<u>Heifers</u>
600-700 lbs.	NQ	NQ
700-800 lbs.	NQ	128.00-131.00
800-900 lbs.	NQ	126.50

KANSAS WEEKLY GRAIN BIDS

[Kansas Grain Bids](#)

	<u>Terminal Elevators</u>	<u>Country Elevators</u>
US NO 1 HR Winter Wheat	5.2025-5.55	5.1525-5.41
US NO 2 Yellow Corn	3.7525-4.2425	4.1025-4.5225
US NO 2 Sorghum	4.9725-5.3425	4.3525-5.3925
US NO 2 Soybeans	9.8625-10.3875	9.3425-10.0875
Sunflower - Oilseeds (Goodland)		18.50
Cotton - West Texas		65.54

KANSAS WEEKLY SLAUGHTER CATTLE

[Cattle Auction Summary](#)

Slaughter Cows

	<u>Average</u>	<u>High</u>	<u>Low</u>
Prem White	NQ	NQ	NQ
Breakers	63.14	70.25	NQ
Boners	51.07	NQ	NQ
Lean	43.76	NQ	NQ

Slaughter Bulls

	<u>Average</u>	<u>High</u>	<u>Low</u>
YG 1-2	70.13	76.66	NQ

KANSAS WEEKLY ETHANOL BIDS

[Ethanol Summary](#)

DDG	150.00-210.00
Modified Wet	NQ
Wet	50.00-70.00

KANSAS WEEKLY HAY PRICES

[Kansas Hay](#)

	<u>Southwest KS</u>	<u>South Central KS</u>
Alfalfa (Dairy)		
Supreme	190.00-200.00	210
Premium	185	180
Ground & Delivered	150.00-170.00	135.00-160.00

KANSAS WEEKLY WTD AVG

[AMS 2484](#)

SLAUGHTER CATTLE REPORT

	<u>This Week</u>	<u>Last Week</u>	<u>Last Year</u>
Live Str	\$105.90	\$107.76	\$109.77
Live Hfr	\$105.95	\$108.00	\$109.79
Dressed Str	NQ	\$168.82	\$174.62
Dressed Hfr	NQ	NQ	NQ

USDA Livestock Poultry and Grain Market News

Dodge City, KS

Phone: (620) 227-8881

Email: dodgecity.lpgmn@usda.gov

<http://www.ams.usda.gov/lpsmarketnewspage>