

# KANSAS WEEKLY MARKET RECAP

Recap For Week Ending:

February 14, 2020

**Receipts:** This Week: 8,185 Week Ago: 9,765 Year Ago: 12,212

Compared to last week: feeder steers sold mostly steady to 3.00 higher, while feeder heifers sold uneven, 2.00 lower to 3.00 higher. The undertone on steer and heifer calves was higher statewide as limited offerings were available. Overall demand was good to very good on moderate supply. Slaughter cows 1.00 to 4.00 higher. Slaughter bulls 2.00 to 3.00 higher on a limited test. Direct feeder cattle no trend due to limited receipts last week. Compared to last week live purchases traded 2.00 lower from 118.00 to 119.00, bulk at 119.00.

## KANSAS WEEKLY FEEDER CATTLE AVERAGES

[Cattle Auction Summary](#)

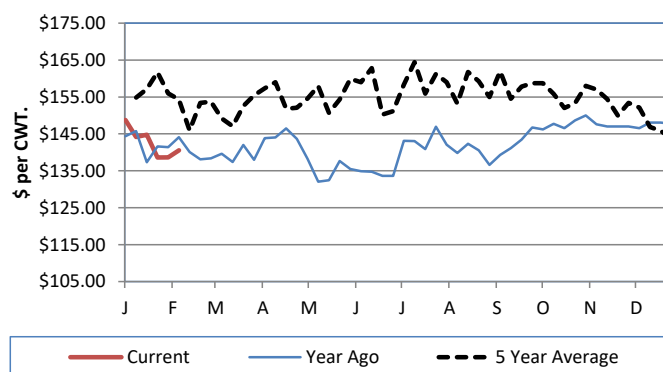
### Feeder Steers (M&L 1)

	This Week	Last Week	Year Ago
400-500 lbs.	\$191.38	\$186.77	\$189.40
500-600 lbs.	\$171.10	\$165.89	\$173.95
600-700 lbs.	\$155.86	\$154.50	\$153.13
700-800 lbs.	\$143.36	\$143.33	\$141.95
800-900 lbs.	\$138.73	\$136.15	\$138.56
900-1000 lbs.	\$127.43	\$127.21	\$133.94

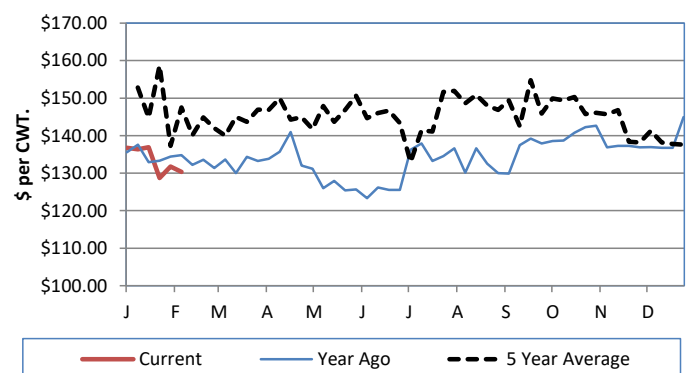
### Feeder Heifers (M&L 1)

	This Week	Last Week	Year Ago
400-500 lbs.	\$160.06	\$152.85	\$165.24
500-600 lbs.	\$148.33	\$145.15	\$155.12
600-700 lbs.	\$134.69	\$134.88	\$143.46
700-800 lbs.	\$130.33	\$131.76	\$132.20
800-900 lbs.	\$122.28	\$126.58	\$130.40
900-1000 lbs.	NQ	NQ	\$124.22

Weekly M&L 1 700-900 lb. Feeder Steer Price



Weekly M&L 1 700-800 lb. Feeder Heifer Price



## KANSAS DIRECT FEEDER CATTLE

[DC LS165](#)

(Current FOB)

	Steers	Heifers
600-700 lbs.	NQ	NQ
700-800 lbs.	NQ	NQ
800-900 lbs.	NQ	NQ

## KANSAS WEEKLY GRAIN BIDS

	Central KS	Western KS
US NO 1 HR Winter Wheat	4.38-5.01	4.06-4.33
US NO 2 Yellow Corn	3.57-3.98	3.35-3.88
US NO 2 Sorghum	5.55-6.66	5.32-5.95
US NO 2 Soybeans	8.04-8.78	7.54-8.06
Sunflower - Oilseeds (Goodland)	18.65	
Cotton - West Texas	62.16	

## KANSAS WEEKLY SLAUGHTER CATTLE

[Cattle Auction Summary](#)

Slaughter Cows

	Average	High	Low
Prem White	NQ	NQ	NQ
Breakers	70.72	NQ	NQ
Boners	62.52	66.93	55.50
Lean	45.84	NQ	NQ

Slaughter Bulls

	Average	High	Low
YG 1-2	88.07	93.05	NQ

## KANSAS WEEKLY ETHANOL BIDS

[NW GR115](#)

DDG	140.00-175.00
Modified Wet	NQ
Wet	43.00-65.00

## KANSAS WEEKLY HAY PRICES

[DC GR310](#)

	Southwest KS	South Central KS
<b>Alfalfa (Dairy)</b>		
Supreme	185.00-226.00	195.00-225.00
Premium	170.00-195.00	175.00-200.00
Ground & Delivered	150.00-160.00	135.00-145.00

## KANSAS WEEKLY WTD AVG CATTLE REPORT

[LM CT157](#)

	This Week	Last Week	Last Year
Live Str	\$118.93	\$120.97	\$124.96
Live Hfr	\$119.00	\$120.95	\$124.90
Dressed Str	\$190.00	\$193.00	\$200.00
Dressed Hfr	\$190.00	NQ	NQ

## USDA Livestock Poultry and Grain Market News

Dodge City, KS

Phone: (620) 227-8881

Email: [dodgecity.lpgmn@ams.usda.gov](mailto:dodgecity.lpgmn@ams.usda.gov)

<http://www.ams.usda.gov/lpsmarketnewspage>