

KANSAS WEEKLY MARKET RECAP

Recap For Week Ending:

September 13, 2019

Receipts: This Week: 7,729 Week Ago: 4,997 Year Ago: 8,321

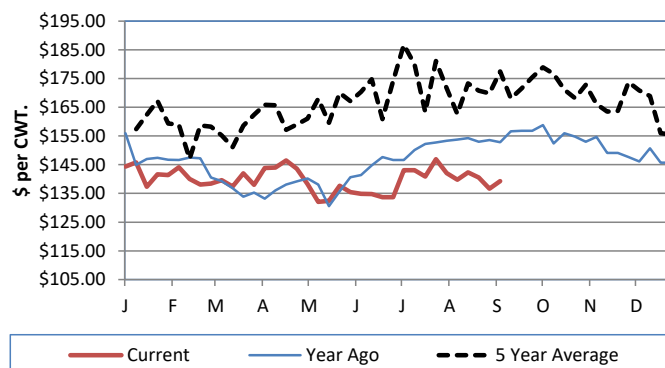
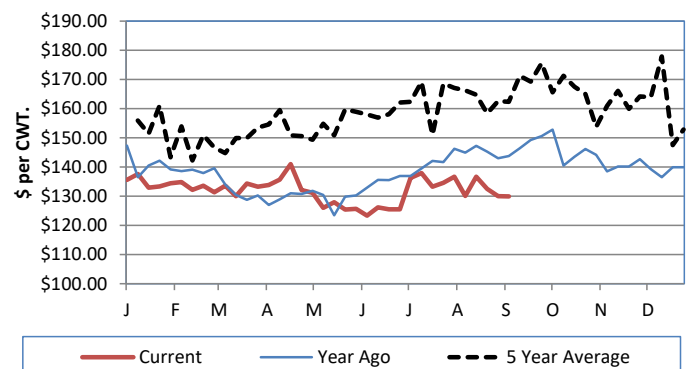
Compared to last week: Feeder steers sold mostly steady to 3.00 lower, with the exception of 800-950 lbs 3.00 to 7.00 higher. Feeder heifers mixed, on limited offerings over 700 lbs steady to 2.00 lower with the exception of 600-700 lb weights 8.00 higher. Steer calves on limited comparable sales under 550 lbs sharply lower. Heifer calves on limited sales under 600 lbs steady to 1.00 lower. Slaughter cows steady to 4.00 lower. Slaughter bulls mostly steady. Direct Feeder steers and heifers limited comparable current FOB receipts from last week, but a higher undertone was noted. For the week live purchases traded steady to 1.00 lower from 99.00 to 100.00.

KANSAS WEEKLY FEEDER CATTLE AVERAGES[Cattle Auction Summary](#)**Feeder Steers (M&L 1)**

	<u>This Week</u>	<u>Last Week</u>	<u>Year Ago</u>
400-500 lbs.	\$171.29	\$178.90	\$184.29
500-600 lbs.	\$155.88	\$166.67	\$177.80
600-700 lbs.	\$146.11	\$147.82	\$167.89
700-800 lbs.	\$142.10	\$143.80	\$159.73
800-900 lbs.	\$138.17	\$134.75	\$153.45
900-1000 lbs.	\$129.78	\$130.20	\$147.12

Feeder Heifers (M&L 1)

	<u>This Week</u>	<u>Last Week</u>	<u>Year Ago</u>
400-500 lbs.	\$151.67	\$148.45	\$166.65
500-600 lbs.	\$144.15	\$140.48	\$158.77
600-700 lbs.	\$141.20	\$134.13	\$155.17
700-800 lbs.	\$129.90	\$130.04	\$146.41
800-900 lbs.	\$126.03	\$128.51	\$140.29
900-1000 lbs.	\$124.11	\$124.77	\$136.08

Weekly M&L 1 700-900 lb. Feeder Steer Price**Weekly M&L 1 700-800 lb. Feeder Heifer Price****KANSAS DIRECT FEEDER CATTLE**[DC LS165](#)

(Current FOB)

	<u>Steers</u>	<u>Heifers</u>
600-700 lbs.	NQ	131.50
700-800 lbs.	142.00	127.00-133.50
800-900 lbs.	123.25-137.00	NQ

KANSAS WEEKLY GRAIN BIDS

	<u>Central KS</u>	<u>Western KS</u>
US NO 1 HR Winter Wheat	3.53-3.89	3.33-3.64
US NO 2 Yellow Corn	3.17-3.69	3.04-3.74
US NO 2 Sorghum	4.95-6.05	4.89-5.70
US NO 2 Soybeans	7.44-8.29	7.03-7.84
Sunflower - Oilseeds (Goodland)	16.45	
Cotton - West Texas	56.63	

KANSAS WEEKLY SLAUGHTER CATTLE[Cattle Auction Summary](#)**Slaughter Cows**

	<u>Average</u>	<u>High</u>	<u>Low</u>
Prem White	0.00	0.00	0.00
Breakers	0.00	0.00	0.00
Boners	57.34	63.03	51.64
Lean	48.21	0.00	37.00

Slaughter Bulls

	<u>Average</u>	<u>High</u>	<u>Low</u>
YG 1-2	80.01	84.00	64.14

KANSAS WEEKLY ETHANOL BIDS[NW GR115](#)

DDG	130.00-170.00
Modified Wet	NQ
Wet	35.00-60.00

KANSAS WEEKLY HAY PRICES[DC GR310](#)

	<u>Southwest KS</u>	<u>South Central KS</u>
Alfalfa (Dairy)		
Supreme	185.00-226.00	195.00-225.00
Premium	170.00-195.00	175.00-200.00
Ground & Delivered	150.00-160.00	135.00-150.00

USDA Livestock Poultry and Grain Market News

Dodge City, KS

Phone: (620) 227-8881

Email: dodgecity.lpgmn@ams.usda.gov<http://www.ams.usda.gov/lpsmarketnewspage>**KANSAS WEEKLY WTD AVG CATTLE REPORT**[LM CT157](#)

	<u>This Week</u>	<u>Last Week</u>	<u>Last Year</u>
Live Str	\$99.48	\$99.96	\$110.96
Live Hfr	\$99.42	\$99.95	\$110.80
Dressed Str	\$159.00	\$164.35	\$176.00
Dressed Hfr	\$160.00	\$164.54	NQ