

KANSAS WEEKLY MARKET RECAP

Recap For Week Ending:

July 13, 2019

Receipts: This Week: 3,845 Week Ago: No Sales Year Ago: 7,509

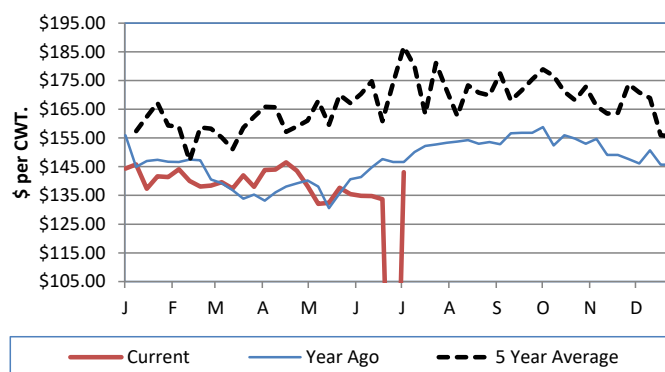
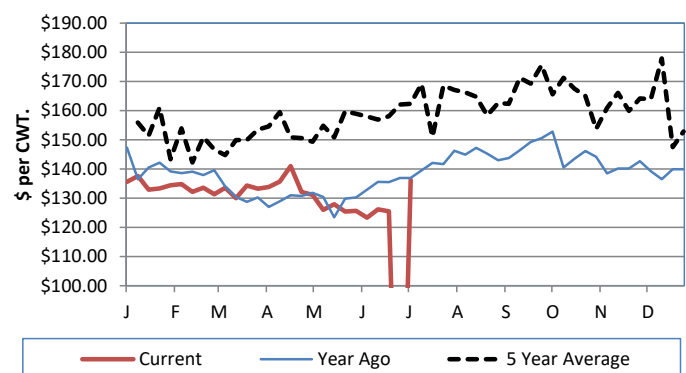
Compared to two weeks ago: Feeder steers not enough comparable weights for a market trend except 800-1000 lbs 7.00 to 10.00 higher using limited comparable weights. Feeder heifers not enough comparable weights for an accurate market trend. Steer and heifer calves not enough for a market trend. Slaughter cows uneven, firm to 1.00 lower. Slaughter bulls mostly steady to firm. Direct Feeder steers and heifers had a limited tested on a current FOB basis but a higher undertone was noted. Feeder heifers 5.00 higher on few sales. For the week in Kansas, live cash trades moved 3.00 higher at 112.00.

KANSAS WEEKLY FEEDER CATTLE AVERAGES[Cattle Auction Summary](#)**Feeder Steers (M&L 1)**

	<u>This Week</u>	<u>Last Week</u>	<u>Year Ago</u>
400-500 lbs.	\$181.86	NQ	\$184.06
500-600 lbs.	\$165.42	NQ	\$171.50
600-700 lbs.	\$157.61	NQ	\$166.91
700-800 lbs.	\$150.61	NQ	\$155.84
800-900 lbs.	\$140.52	NQ	\$148.26
900-1000 lbs.	\$132.28	NQ	\$138.49

Feeder Heifers (M&L 1)

	<u>This Week</u>	<u>Last Week</u>	<u>Year Ago</u>
400-500 lbs.	\$155.57	NQ	\$158.50
500-600 lbs.	\$151.49	NQ	\$154.01
600-700 lbs.	\$144.25	NQ	\$149.35
700-800 lbs.	\$136.26	NQ	\$139.50
800-900 lbs.	\$130.20	NQ	\$132.35
900-1000 lbs.	\$117.32	NQ	\$121.51

Weekly M&L 1 700-900 lb. Feeder Steer Price**Weekly M&L 1 700-800 lb. Feeder Heifer Price****KANSAS DIRECT FEEDER CATTLE**[DC LS165](#)

(Current FOB)

	<u>Steers</u>	<u>Heifers</u>
600-700 lbs.	133.50	NQ
700-800 lbs.	NQ	130.00-130.50
800-900 lbs.	NQ	NQ

KANSAS WEEKLY GRAIN BIDS

	<u>Central KS</u>	<u>Western KS</u>
US NO 1 HR Winter Wheat	4.0625-4.6225	3.84-4.32
US NO 2 Yellow Corn	3.925-4.7425	3.88-4.54
US NO 2 Sorghum	6.31-7.58	6.29-7.04
US NO 2 Soybeans	7.65-8.4825	7.24-7.88
Sunflower - Oilseeds (Goodland)	16.50	
Cotton - West Texas	55.61	

KANSAS WEEKLY SLAUGHTER CATTLE[Cattle Auction Summary](#)**Slaughter Cows**

	<u>Average</u>	<u>High</u>	<u>Low</u>
Prem White	0.00	0.00	0.00
Breakers	76.31	0.00	0.00
Boners	57.65	66.09	54.87
Lean	47.57	0.00	0.00

Slaughter Bulls

	<u>Average</u>	<u>High</u>	<u>Low</u>
YG 1-2	80.37	89.11	72.51

KANSAS WEEKLY ETHANOL BIDS[NW GR115](#)

DDG	135.00-175.00
Modified Wet	NQ
Wet	50.00-60.00

KANSAS WEEKLY HAY PRICES[DC GR310](#)

	<u>Southwest KS</u>	<u>South Central KS</u>
Alfalfa (Dairy)		
Supreme	185.00-210.00	195.00-215.00
Premium	170.00-195.00	175.00-200.00
Ground & Delivered	195.00-205.00	165.00-185.00

KANSAS WEEKLY WTD AVG CATTLE REPORT[LM CT157](#)

	<u>This Week</u>	<u>Last Week</u>	<u>Last Year</u>
Live Str	\$111.89	\$108.92	\$110.89
Live Hfr	\$111.92	\$108.97	\$110.78
Dressed Str	\$182.00	NQ	\$173.00
Dressed Hfr	NQ	NQ	NQ

USDA Livestock Poultry and Grain Market News

Dodge City, KS

Phone: (620) 227-8881

Email: dodgecity.lpgmn@ams.usda.gov<http://www.ams.usda.gov/lpsmarketnewspage>