

KANSAS WEEKLY MARKET RECAP

Recap For Week Ending: **November 27, 2020**

Receipts: This Week: 1,252 Week Ago: 12,720 Year Ago: 0

Compared to last week: There was not any feeder cattle reported in Kansas this week, so no feeder cattle trend available. Prices as of week ending 11/20. Receipts are for a Replacement Cattle sale this week. Direct feeder steers and heifers, too few Current FOB trades for an accurate test. For the week live purchases traded 1.00 higher at 111.00.

KANSAS WEEKLY FEEDER CATTLE AVERAGES

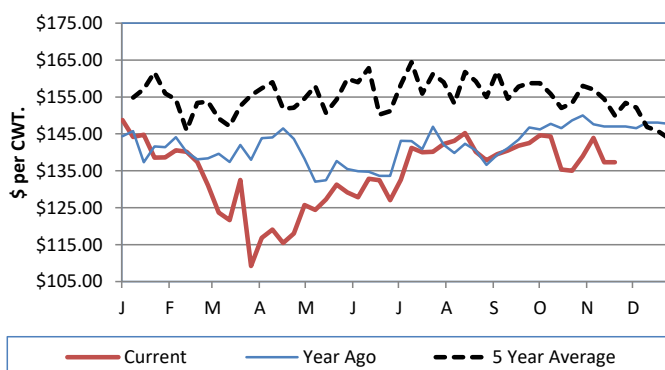
[Cattle Auction Summary](#)

Feeder Steers (M&L 1)

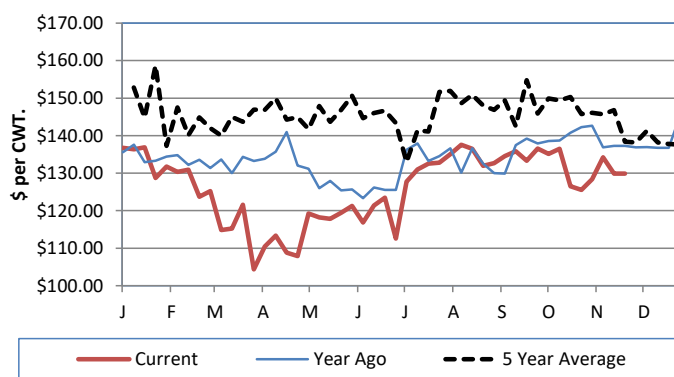
Feeder Heifers (M&L 1)

	<u>This Week</u>	<u>Last Week</u>	<u>Year Ago</u>		<u>This Week</u>	<u>Last Week</u>	<u>Year Ago</u>
400-500 lbs.	\$177.71	\$177.71	\$172.69	400-500 lbs.	\$147.41	\$147.41	\$153.79
500-600 lbs.	\$157.91	\$157.91	\$157.62	500-600 lbs.	\$138.09	\$138.09	\$139.46
600-700 lbs.	\$143.48	\$143.48	\$147.37	600-700 lbs.	\$128.68	\$128.68	\$137.70
700-800 lbs.	\$137.80	\$137.80	\$148.55	700-800 lbs.	\$129.88	\$129.88	\$137.28
800-900 lbs.	\$136.98	\$136.98	\$145.75	800-900 lbs.	\$126.75	\$126.75	\$136.24
900-1000 lbs.	\$134.31	\$134.31	\$141.31	900-1000 lbs.	\$120.79	\$120.79	\$127.90

Weekly M&L 1 700-900 lb. Feeder Steer Price



Weekly M&L 1 700-800 lb. Feeder Heifer Price



KANSAS DIRECT FEEDER CATTLE

[DC LS165](#)

(Current FOB)

	<u>Steers</u>	<u>Heifers</u>
600-700 lbs.	141.00	NQ
700-800 lbs.	133.40	NQ
800-900 lbs.	NQ	NQ

KANSAS WEEKLY GRAIN BIDS

[Kansas Grain Bids](#)

	<u>Terminal Elevators</u>	<u>Country Elevators</u>
US NO 1 HR Winter Wheat	5.0375-5.465	4.9875-5.3525
US NO 2 Yellow Corn	3.98-4.315	4.32-4.6875
US NO 2 Sorghum	5.40-5.815	5.25-5.6375
US NO 2 Soybeans	11.22-11.6175	10.7125-11.2175
Sunflower - Oilseeds (Goodland)		18.75
Cotton - West Texas		67.99

KANSAS WEEKLY SLAUGHTER CATTLE

[Cattle Auction Summary](#)

Slaughter Cows

	<u>Average</u>	<u>High</u>	<u>Low</u>
Prem White	NQ	NQ	NQ
Breakers	59.14	67.35	NQ
Boners	49.71	NQ	NQ
Lean	41.96	35.66	NQ

Slaughter Bulls

	<u>Average</u>	<u>High</u>	<u>Low</u>
YG 1-2	67.01	74.82	56.69

KANSAS WEEKLY ETHANOL BIDS

[Ethanol Summary](#)

DDG	189.00-225.00
Modified Wet	NQ
Wet	52.00-70.00

KANSAS WEEKLY HAY PRICES

[Kansas Hay](#)

	<u>Southwest KS</u>	<u>South Central KS</u>
Alfalfa (Dairy)		
Supreme	190.00-220.00	210
Premium	180.00-189.00	175.00-180.00
Ground & Delivered	140.00-175.00	135.00-175.00

KANSAS WEEKLY WTD AVG

[AMS 2484](#)

SLAUGHTER CATTLE REPORT

	<u>This Week</u>	<u>Last Week</u>	<u>Last Year</u>
Live Str	\$110.98	\$109.93	\$118.25
Live Hfr	\$110.92	\$109.86	\$118.33
Dressed Str	\$176.00	\$172.00	\$187.00
Dressed Hfr	\$174.54	\$172.00	NQ

USDA Livestock Poultry and Grain Market News

Dodge City, KS

Phone: (620) 227-8881

Email: dodgecity.lpgmn@usda.gov

<http://www.ams.usda.gov/lpsmarketnewspage>