

**KANSAS WEEKLY MARKET RECAP**

Recap For Week Ending:

July 31, 2020

Receipts: This Week: 7,613 Week Ago: 6,592 Year Ago: 11,188

Compared to last week: Feeder steers under 700 lbs higher undertone noted; above 700 lbs 3.00 to 5.00 higher. Heifers under 700 lbs higher undertone noted; over 700 lbs 3.00 to 5.00 higher. Slaughter cows 4.00 higher. Slaughter bulls 5.00 higher. Direct feeder cattle, very limited comparable Current FOB receipts from last week. On Wednesday negotiated cash trading was active on good demand. For the week live purchases moved mostly 1.00 higher at 97.00, with a few up to 98.00.

**KANSAS WEEKLY FEEDER CATTLE AVERAGES**

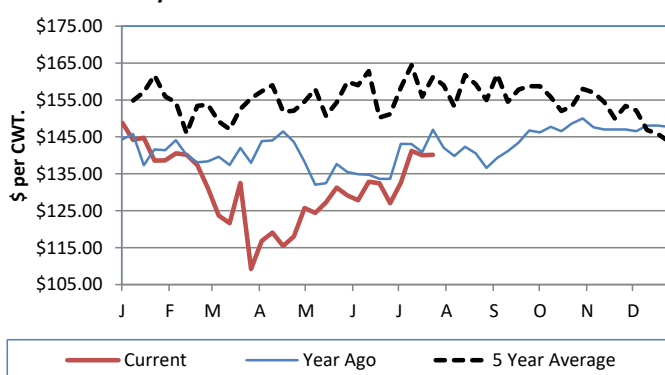
[Cattle Auction Summary](#)

**Feeder Steers (M&L 1)**

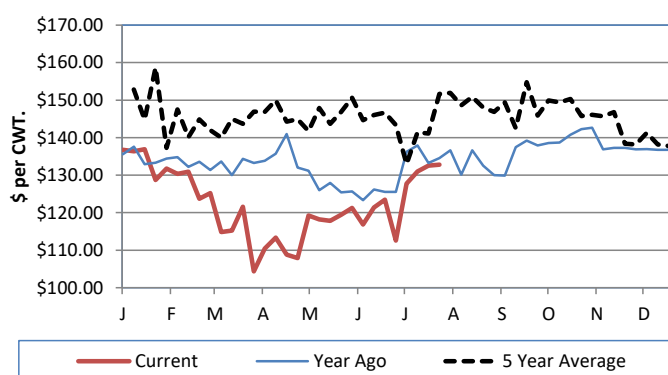
**Feeder Heifers (M&L 1)**

|               | <u>This Week</u> | <u>Last Week</u> | <u>Year Ago</u> |               | <u>This Week</u> | <u>Last Week</u> | <u>Year Ago</u> |
|---------------|------------------|------------------|-----------------|---------------|------------------|------------------|-----------------|
| 400-500 lbs.  | \$182.02         | \$173.00         | \$177.76        | 400-500 lbs.  | \$156.92         | \$156.00         | NQ              |
| 500-600 lbs.  | \$170.77         | \$156.53         | \$163.20        | 500-600 lbs.  | \$147.94         | \$149.24         | \$149.15        |
| 600-700 lbs.  | \$152.41         | \$150.77         | \$167.28        | 600-700 lbs.  | \$141.93         | \$141.03         | \$145.97        |
| 700-800 lbs.  | \$143.61         | \$142.94         | \$153.30        | 700-800 lbs.  | \$132.79         | \$132.52         | \$134.56        |
| 800-900 lbs.  | \$139.22         | \$137.30         | \$145.78        | 800-900 lbs.  | \$129.28         | \$125.16         | \$131.46        |
| 900-1000 lbs. | \$129.26         | \$130.97         | \$136.82        | 900-1000 lbs. | \$121.89         | \$118.11         | \$126.46        |

**Weekly M&L 1 700-900 lb. Feeder Steer Price**



**Weekly M&L 1 700-800 lb. Feeder Heifer Price**



**KANSAS DIRECT FEEDER CATTLE**

[DC LS165](#)

(Current FOB)

|              | <u>Steers</u> | <u>Heifers</u> |
|--------------|---------------|----------------|
| 600-700 lbs. | NQ            | NQ             |
| 700-800 lbs. | 142.10        | 133.10         |
| 800-900 lbs. | NQ            | NQ             |

**KANSAS WEEKLY GRAIN BIDS**

|                                 | <u>Central KS</u> | <u>Western KS</u> |
|---------------------------------|-------------------|-------------------|
| US NO 1 HR Winter Wheat         | 4.01-4.39         | 3.97-4.21         |
| US NO 2 Yellow Corn             | 2.84-3.30         | 2.96-3.45         |
| US NO 2 Sorghum                 | 5.91-6.61         | 5.64-6.16         |
| US NO 2 Soybeans                | 8.29-8.68         | 7.85-8.25         |
| Sunflower - Oilseeds (Goodland) |                   | 18.45             |
| Cotton - West Texas             |                   | 57.80             |

**KANSAS WEEKLY SLAUGHTER CATTLE**

[Cattle Auction Summary](#)

**Slaughter Cows**

|            | <u>Average</u> | <u>High</u> | <u>Low</u> |
|------------|----------------|-------------|------------|
| Prem White | NQ             | NQ          | NQ         |
| Breakers   | 75.57          | 79.36       | 66.76      |
| Boners     | 68.11          | NQ          | NQ         |
| Lean       |                | NQ          | NQ         |

**Slaughter Bulls**

|        | <u>Average</u> | <u>High</u> | <u>Low</u> |
|--------|----------------|-------------|------------|
| YG 1-2 | 93.81          | 103.56      | NQ         |

**KANSAS WEEKLY ETHANOL BIDS**

[NW GR115](#)

|              |               |
|--------------|---------------|
| DDG          | 115.00-145.00 |
| Modified Wet | NQ            |
| Wet          | 40.00-55.00   |

**KANSAS WEEKLY HAY PRICES**

[DC GR310](#)

|                        | <u>Southwest KS</u> | <u>South Central KS</u> |
|------------------------|---------------------|-------------------------|
| <b>Alfalfa (Dairy)</b> |                     |                         |
| Supreme                | 180.00-190.00       | 210                     |
| Premium                | 180.00-185.00       | 170.00-185.00           |
| Ground & Delivered     | 145.00-170.00       | 135.00-155.00           |

**KANSAS WEEKLY WTD AVG**

[AMS 2484](#)

**SLAUGHTER CATTLE REPORT**

|             | <u>This Week</u> | <u>Last Week</u> | <u>Last Year</u> |
|-------------|------------------|------------------|------------------|
| Live Str    | \$96.85          | \$95.68          | \$111.00         |
| Live Hfr    | \$96.87          | \$95.83          | \$110.99         |
| Dressed Str | \$160.00         | \$158.00         | \$182.00         |
| Dressed Hfr | \$160.00         | \$158.00         | NQ               |

**USDA Livestock Poultry and Grain Market News**

Dodge City, KS

Phone: (620) 227-8881

Email: [dodgecity.lpgmn@ams.usda.gov](mailto:dodgecity.lpgmn@ams.usda.gov)

<http://www.ams.usda.gov/lpsmarketnewspage>