

KANSAS WEEKLY MARKET RECAP

Recap For Week Ending: **September 11, 2020**

Receipts: This Week: 5,059 Week Ago: 5,347 Year Ago: 7,729

Compared to last week: Feeder steers 500 to 950 lbs 2.00 to 5.00 higher. Heifers 600 to 850 lbs 2.00 to 4.00 higher; under 6 00 lbs instances 1.00 to 2.00 lower. Slaughter cows and bulls sold steady. Direct feeder steers and heifers, very limited comparable current FOB receipts from last week. For the week, live purchases moved steady to 1.00 lower from 101.00 to 102.00, mostly at 101.00.

KANSAS WEEKLY FEEDER CATTLE AVERAGES

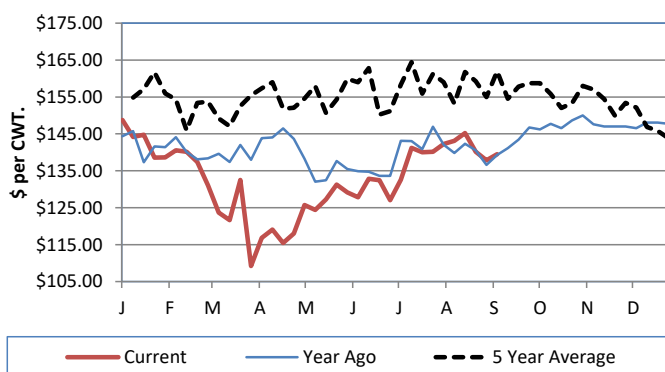
[Cattle Auction Summary](#)

Feeder Steers (M&L 1)

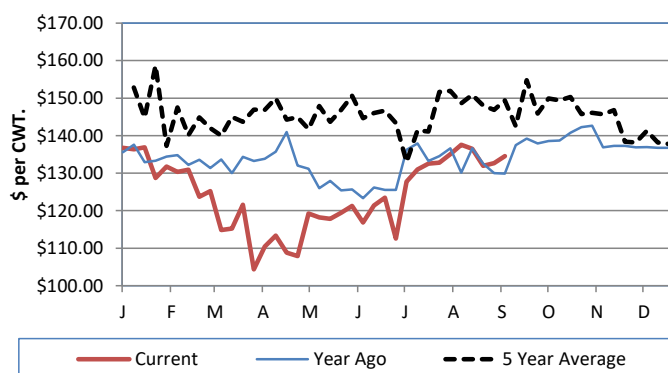
Feeder Heifers (M&L 1)

| | <u>This Week</u> | <u>Last Week</u> | <u>Year Ago</u> | | <u>This Week</u> | <u>Last Week</u> | <u>Year Ago</u> |
|---------------|------------------|------------------|-----------------|---------------|------------------|------------------|-----------------|
| 400-500 lbs. | \$174.22 | \$168.78 | \$171.29 | 400-500 lbs. | \$136.50 | \$147.44 | \$151.67 |
| 500-600 lbs. | \$155.43 | \$160.04 | \$155.88 | 500-600 lbs. | \$133.41 | \$140.71 | \$144.15 |
| 600-700 lbs. | \$146.59 | \$147.28 | \$146.11 | 600-700 lbs. | \$138.80 | \$134.66 | \$141.20 |
| 700-800 lbs. | \$142.19 | \$140.02 | \$142.10 | 700-800 lbs. | \$134.57 | \$132.66 | \$129.90 |
| 800-900 lbs. | \$137.72 | \$136.47 | \$138.17 | 800-900 lbs. | \$128.62 | \$125.53 | \$126.03 |
| 900-1000 lbs. | \$130.65 | \$128.74 | \$129.78 | 900-1000 lbs. | \$119.81 | \$112.18 | \$124.11 |

Weekly M&L 1 700-900 lb. Feeder Steer Price



Weekly M&L 1 700-800 lb. Feeder Heifer Price



KANSAS DIRECT FEEDER CATTLE

[DC LS165](#)

(Current FOB)

| | <u>Steers</u> | <u>Heifers</u> |
|--------------|---------------|----------------|
| 600-700 lbs. | 149.31 | NQ |
| 700-800 lbs. | 137.90 | 126.00 |
| 800-900 lbs. | 133.10-136.00 | NQ |

KANSAS WEEKLY GRAIN BIDS

[Kansas Grain Bids](#)

| | <u>Terminal Elevators</u> | <u>Country Elevators</u> |
|---------------------------------|---------------------------|--------------------------|
| US NO 1 HR Winter Wheat | 4.245-4.58 | 4.245-4.44 |
| US NO 2 Yellow Corn | 3.25-3.585 | 3.3525-3.985 |
| US NO 2 Sorghum | 4.0425-4.435 | 3.9025-4.235 |
| US NO 2 Soybeans | 9.00-9.43 | 8.53-9.06 |
| Sunflower - Oilseeds (Goodland) | | 16.85 |
| Cotton - West Texas | | 58.62 |

KANSAS WEEKLY SLAUGHTER CATTLE

[Cattle Auction Summary](#)

Slaughter Cows

| | <u>Average</u> | <u>High</u> | <u>Low</u> |
|------------|----------------|-------------|------------|
| Prem White | NQ | NQ | NQ |
| Breakers | 65.68 | 70.78 | NQ |
| Boners | 59.00 | NQ | NQ |
| Lean | 51.73 | NQ | NQ |

Slaughter Bulls

| | <u>Average</u> | <u>High</u> | <u>Low</u> |
|--------|----------------|-------------|------------|
| YG 1-2 | 86.86 | 90.12 | NQ |

KANSAS WEEKLY ETHANOL BIDS

[Ethanol Summary](#)

| | |
|--------------|---------------|
| DDG | 115.00-170.00 |
| Modified Wet | NQ |
| Wet | 40.00-60.00 |

KANSAS WEEKLY HAY PRICES

[Kansas Hay](#)

| | <u>Southwest KS</u> | <u>South Central KS</u> |
|------------------------|---------------------|-------------------------|
| Alfalfa (Dairy) | | |
| Supreme | 190.00-200.00 | 210 |
| Premium | 180 | 170.00-185.00 |
| Ground & Delivered | 140.00-170.00 | 135.00-155.00 |

KANSAS WEEKLY WTD AVG

[AMS 2484](#)

SLAUGHTER CATTLE REPORT

| | <u>This Week</u> | <u>Last Week</u> | <u>Last Year</u> |
|-------------|------------------|------------------|------------------|
| Live Str | \$101.34 | \$103.24 | \$99.48 |
| Live Hfr | \$101.33 | \$103.05 | \$99.42 |
| Dressed Str | \$160.00 | NQ | \$159.00 |
| Dressed Hfr | \$161.00 | NQ | \$160.00 |

USDA Livestock Poultry and Grain Market News

Dodge City, KS

Phone: (620) 227-8881

Email: dodgecity.lpgmn@usda.gov

<http://www.ams.usda.gov/lpsmarketnewspage>