

**KANSAS WEEKLY MARKET RECAP**

Recap For Week Ending

July 16, 2021

**Receipts:** This Week: 6,528      Week Ago: 3,928      Year Ago: 6,822

Compared to last week, feeder steers 600-800 lbs sold steady to 2.00 higher, All other weights sold 2.00 to 5.00 lower. Feeder heifers 400-500 lbs sold 10.00 lower and 500-600 lbs sold 2.00 lower. Feeder Heifers above 600 lbs sold 1.00 to 5.00 higher. Demand was good. Slaughter cows sold steady to 1.00 higher and bulls sold 3.00 higher. Hay market prices were steady for alfalfa and mostly steady for grass hay while demand remains good. Most areas of Kansas have received on again-off again spotty rains, except for a couple of unlucky pockets along the northern and southern borders.

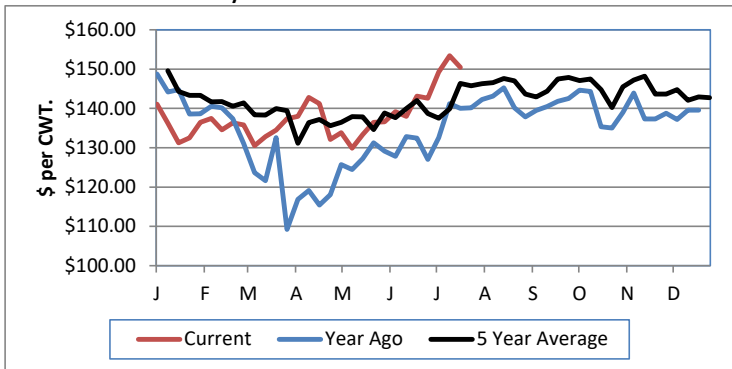
**KANSAS WEEKLY FEEDER CATTLE AVERAGES**

[Cattle Auction Summary](#)

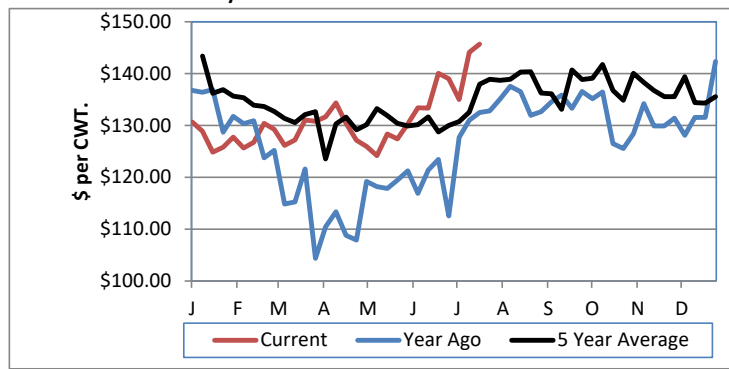
Feeder Steers:	This Week	Last Week	Year Ago
M&L 1			
400-500 lbs.	\$180.05	\$185.70	\$184.00
500-600 lbs.	\$176.61	\$183.23	\$163.91
600-700 lbs.	\$169.44	\$169.83	\$151.83
700-800 lbs.	\$158.71	\$156.83	\$146.14
800-900 lbs.	\$145.57	\$148.85	\$137.41
900-1000 lbs.	\$142.47	\$144.71	\$131.50

Feeder Heifers	This Week	Last Week	Year Ago
M&L 1			
400-500 lbs.	\$156.92	\$167.25	\$147.34
500-600 lbs.	\$157.21	\$159.52	\$144.83
600-700 lbs.	\$153.71	\$146.39	\$138.26
700-800 lbs.	\$145.68	\$144.12	\$131.01
800-900 lbs.	\$141.12	\$135.97	\$125.57
900-1000 lbs.	\$129.86	\$123.00	\$123.43

Weekly M&L 1 700-900 lb. Feeder Steer Price



Weekly M&L 1 700-800 lb. Feeder Heifer Price



**KANSAS DIRECT FEEDER CATTLE**

[Fdr Cattle Direct Summary](#)

Medium and Large 1 (Current FOB)

	Steers	Heifers
600-700 lbs.	NQ	NQ
700-800 lbs.	NQ	143.00-145.00
800-900 lbs.	142.50-151.14	NQ

**KANSAS WEEKLY GRAIN BIDS**

[Kansas Grain Bids](#)

	Terminal Elevators	Country Elevators
US NO 1 HR Winter Wheat	5.7375-6.4650	5.6775-6.5650
US NO 2 Yellow Corn	5.3325-6.5625	6.1025-7.0825
US NO 2 Sorghum	5.7600-6.2875	5.7525-6.3325
US NO 2 Soybeans	13.8625-14.6875	13.2800-14.4475
Sunflower - Oilseeds (country elevators)		NQ
Cotton - West Texas		85.95

**KANSAS WEEKLY SLAUGHTER CATTLE**

[Cattle Auction Summary](#)

Slaughter Cows

	Average	High	Low
Dressing	NQ	NQ	NQ
Prem White	NQ	NQ	NQ
Breakers	75.12	80.48	NQ
Boners	71.76	NQ	NQ
Lean	62.25	NQ	NQ

**KANSAS WEEKLY ETHANOL BIDS**

[Ethanol Summary](#)

DDG	160.00-195.00
Modified Wet	NQ
Wet	70.00-98.00

Slaughter Bulls

	Average	High	Low
YG 1-2	95.12	101.46	84.59

**KANSAS WEEKLY HAY PRICES**

[Kansas Hay](#)

	Southwest KS	South Central KS
Alfalfa (Dairy)		
Supreme	210.00-250.00	189.00
Premium	NQ	NQ
Ground & Delivered	198.00-240.00	160.00-200.00

**KANSAS WEEKLY WTD AVG SLAUGHTER CATTLE REPORT**

[KS WEEKLY SLAUGHTER CATTLE](#)

	This Week	Last Week	Last Year
Live Str	\$119.86	\$119.51	\$95.38
Live Hfr	\$119.84	\$119.50	\$95.23
Dressed Str	\$195.53	\$193.56	\$157.00
Dressed Hfr	\$196.00	NQ	\$157.00

**USDA Livestock Poultry and Grain Market News**

St Joseph, MO

Phone: (816)676-7000

Email: [stjoe.lpgmn@usda.gov](mailto:stjoe.lpgmn@usda.gov)

<http://www.ams.usda.gov/lpsmarketnewspage>