

KANSAS WEEKLY MARKET RECAP

Recap For Week Ending

September 17, 2021

Receipts: This Week: 5,043 Week Ago: 6,064 Year Ago: 6,781

Compared to last week, steers sold uneven, 1.00 to 5.00 lower, while heifers sold 3.00 to 6.00 lower. Slaughter cows and bulls sold 2.00 to 5.00 lower. Demand was moderate. Compared to last week, fed slaughter steers and heifers in the feedyards sold steady at 123.00. Hay market prices are steady for alfalfa and grass hay. Demand is fair to good, with trades slow.

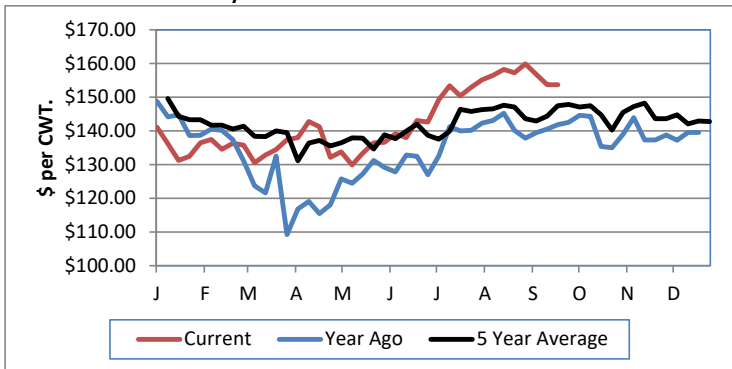
KANSAS WEEKLY FEEDER CATTLE AVERAGES

[Cattle Auction Summary](#)

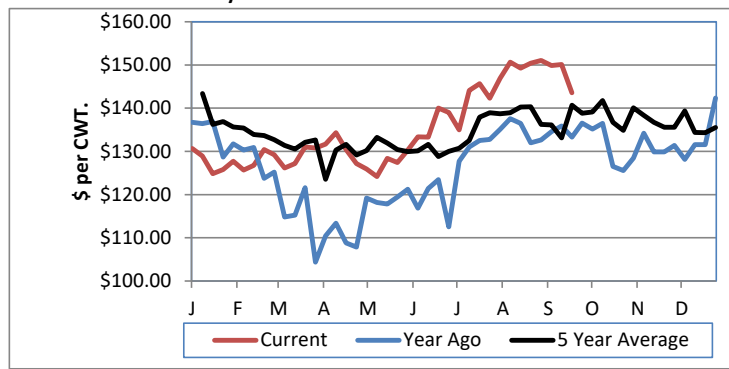
Feeder Steers:	This Week	Last Week	Year Ago
M&L 1			
400-500 lbs.	\$189.11	\$187.21	\$171.50
500-600 lbs.	\$165.23	\$181.36	\$157.01
600-700 lbs.	\$158.12	\$162.89	\$150.92
700-800 lbs.	\$153.95	\$154.15	\$141.67
800-900 lbs.	\$153.49	\$153.33	\$140.11
900-1000 lbs.	\$145.56	\$150.91	\$137.19

Feeder Heifers	This Week	Last Week	Year Ago
M&L 1			
400-500 lbs.	\$156.49	\$162.53	\$154.04
500-600 lbs.	\$153.90	\$151.60	\$143.08
600-700 lbs.	\$144.81	\$148.02	\$139.02
700-800 lbs.	\$143.59	\$150.11	\$135.87
800-900 lbs.	\$135.51	\$141.72	\$129.83
900-1000 lbs.	\$126.24	\$130.30	\$124.07

Weekly M&L 1 700-900 lb. Feeder Steer Price



Weekly M&L 1 700-800 lb. Feeder Heifer Price



KANSAS DIRECT FEEDER CATTLE

[Fdr Cattle Direct Summary](#)

Medium and Large 1 (Current FOB)

	Steers	Heifers
600-700 lbs.	NQ	NQ
700-800 lbs.	157.00	NQ
800-900 lbs.	NQ	NQ

KANSAS WEEKLY GRAIN BIDS

[Kansas Grain Bids](#)

	Terminal Elevators	Country Elevators
US NO 1 HR Winter Wheat	6.4125-7.0550	6.3125-7.2050
US NO 2 Yellow Corn	4.8925-5.4850	5.0825-5.6850
US NO 2 Sorghum	5.1025-5.5350	5.0025-5.4850
US NO 2 Soybeans	12.0900-12.6100	11.9250-12.2100
Sunflower - Oilseeds (country elevators)		NQ
Cotton - West Texas		88.58

KANSAS WEEKLY SLAUGHTER CATTLE

[Cattle Auction Summary](#)

Slaughter Cows

Dressing	Average	High	Low
Prem White	NQ	NQ	NQ
Breakers	68.12	77.41	NQ
Boners	60.33	NQ	NQ
Lean	53.46	NQ	NQ

Slaughter Bulls

	Average	High	Low
YG 1-2	81.13	89.93	74.59

KANSAS WEEKLY ETHANOL BIDS

[Ethanol Summary](#)

DDG	200.00-245.00
Modified Wet	NQ
Wet	75.00-95.00

KANSAS WEEKLY HAY PRICES

[Kansas Hay](#)

	Southwest KS	South Central KS
Alfalfa (Dairy)		
Supreme	210.00	185.00-229.00
Premium	NQ	NQ
Ground & Delivered	198.00-210.00	185.00-205.00

KANSAS WEEKLY WTD AVG SLAUGHTER CATTLE REPORT

[KS WEEKLY SLAUGHTER CATTLE](#)

	This Week	Last Week	Last Year
Live Str	\$123.29	\$123.39	\$103.10
Live Hfr	\$123.34	\$123.42	\$103.13
Dressed Str	\$200.00	\$198.23	\$163.00
Dressed Hfr	NQ	NQ	NQ

USDA Livestock Poultry and Grain Market News

St Joseph, MO

Phone: (816)676-7000

Email: stjoe.lpgmn@usda.gov

<http://www.ams.usda.gov/lpsmarketnewspage>