

KANSAS WEEKLY MARKET RECAP

Recap For Week Ending: **September 18, 2020**

Receipts: This Week: 6,781 Week Ago: 5,059 Year Ago: 8,539

Compared to last week: Feeder steers 600 to 900 lbs steady to 4.00 higher, instances up to 5.00 higher on 600 to 700 lbs; fe w 700 to 850 lbs steady to 2.00 lower; over 900 lbs 3.00 to 10.00 higher. Heifers sold 2.00 to 5.00 higher, instances 2.00 to 4.00 lower on 600 to 850 lbs; over 850 lbs up to 6.00 lower on a light test. Slaughter cows and bulls steady to 3.00 lower. Direct feeder steers and heifers, limited comparable current FOB receipts from last week, but a much higher undertone was noted. For the week, live purchases moved mostly 2.00 higher at 103.00, with a few up to 105.00.

KANSAS WEEKLY FEEDER CATTLE AVERAGES

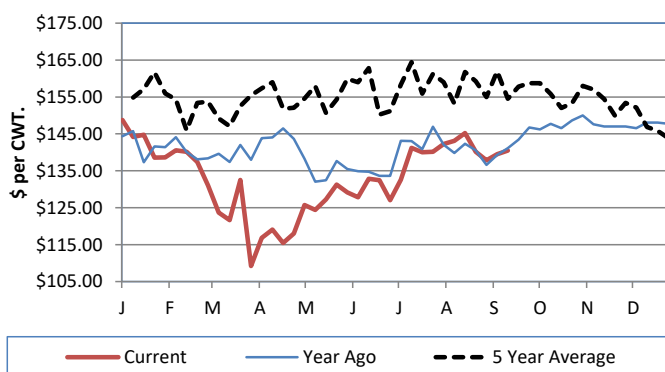
[Cattle Auction Summary](#)

Feeder Steers (M&L 1)

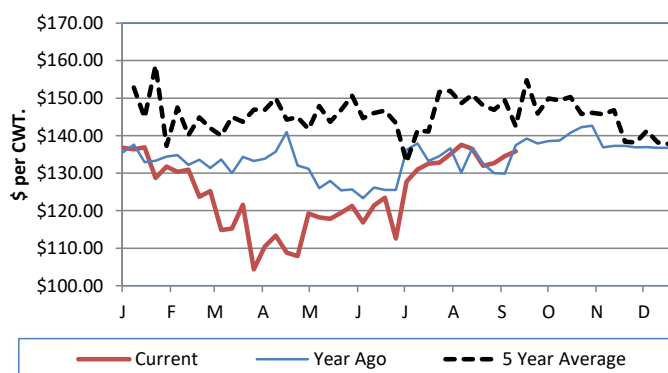
Feeder Heifers (M&L 1)

	<u>This Week</u>	<u>Last Week</u>	<u>Year Ago</u>		<u>This Week</u>	<u>Last Week</u>	<u>Year Ago</u>
400-500 lbs.	\$171.50	\$174.22	\$163.82	400-500 lbs.	\$154.04	\$136.50	NQ
500-600 lbs.	\$157.01	\$155.43	\$157.54	500-600 lbs.	\$143.08	\$133.41	\$145.07
600-700 lbs.	\$150.92	\$146.59	\$151.83	600-700 lbs.	\$139.02	\$138.80	\$138.93
700-800 lbs.	\$141.67	\$142.19	\$144.72	700-800 lbs.	\$135.87	\$134.57	\$137.47
800-900 lbs.	\$140.11	\$137.72	\$138.97	800-900 lbs.	\$129.83	\$128.62	\$128.39
900-1000 lbs.	\$137.19	\$130.65	\$132.39	900-1000 lbs.	\$124.07	\$119.81	NQ

Weekly M&L 1 700-900 lb. Feeder Steer Price



Weekly M&L 1 700-800 lb. Feeder Heifer Price



KANSAS DIRECT FEEDER CATTLE

[DC LS165](#)

(Current FOB)

	<u>Steers</u>	<u>Heifers</u>
600-700 lbs.	NQ	133.95-138.3
700-800 lbs.	146.33	130.00-139.33
800-900 lbs.	NQ	127.45

KANSAS WEEKLY GRAIN BIDS

[Kansas Grain Bids](#)

	<u>Terminal Elevators</u>	<u>Country Elevators</u>
US NO 1 HR Winter Wheat	4.28-4.8825	4.23-4.7425
US NO 2 Yellow Corn	3.36-3.685	3.41-4.085
US NO 2 Sorghum	4.14-4.585	3.96-4.385
US NO 2 Soybeans	9.115-9.905	8.715-9.485
Sunflower - Oilseeds (Goodland)		17.10
Cotton - West Texas		58.66

KANSAS WEEKLY SLAUGHTER CATTLE

[Cattle Auction Summary](#)

Slaughter Cows

	<u>Average</u>	<u>High</u>	<u>Low</u>
Prem White	NQ	NQ	NQ
Breakers	65.20	69.43	NQ
Boners	57.07	NQ	NQ
Lean	49.65	NQ	NQ

Slaughter Bulls

	<u>Average</u>	<u>High</u>	<u>Low</u>
YG 1-2	84.69	91.43	NQ

KANSAS WEEKLY ETHANOL BIDS

[Ethanol Summary](#)

DDG	115.00-170.00
Modified Wet	NQ
Wet	40.00-60.00

KANSAS WEEKLY HAY PRICES

[Kansas Hay](#)

	<u>Southwest KS</u>	<u>South Central KS</u>
Alfalfa (Dairy)		
Supreme	190.00-200.00	210
Premium	180	170.00-185.00
Ground & Delivered	135.00-170.00	135.00-155.00

KANSAS WEEKLY WTD AVG

[AMS 2484](#)

SLAUGHTER CATTLE REPORT

	<u>This Week</u>	<u>Last Week</u>	<u>Last Year</u>
Live Str	\$103.11	\$101.34	\$100.99
Live Hfr	\$103.14	\$101.33	\$101.08
Dressed Str	\$163.00	\$160.00	\$161.72
Dressed Hfr	NQ	\$161.00	\$162.00

USDA Livestock Poultry and Grain Market News

Dodge City, KS

Phone: (620) 227-8881

Email: dodgecity.lpgmn@usda.gov

<http://www.ams.usda.gov/lpsmarketnewspage>