

**KANSAS WEEKLY MARKET RECAP**

Recap For Week Ending

July 30, 2021

**Receipts:** This Week: 6,377      Week Ago: 5,445      Year Ago: 7,613

Compared to last week, Feeder Steers and heifers sold steady to 4.00 higher. Demand was good. Slaughter cows sold steady to 3.00 lower and Slaughter Bulls sold 2.00 to 3.00 higher. Compared to last week, fed slaughter steers and heifers in the feedyard sold 1.00 higher at 120.00. Hay market prices remain mostly steady for alfalfa and steady for grass hay. Trade remains steady, although some area trades have slowed, demand remains good. Rains this season have produced a lot of grinding quality hay which is contributing to a softening of that market, while dairy quality hay remains difficult to come by.

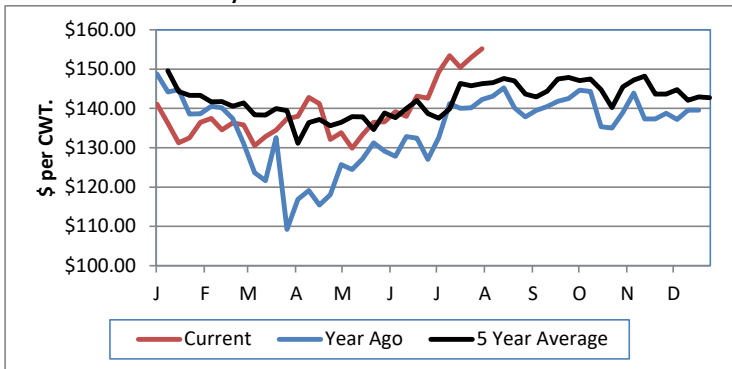
**KANSAS WEEKLY FEEDER CATTLE AVERAGES**

[Cattle Auction Summary](#)

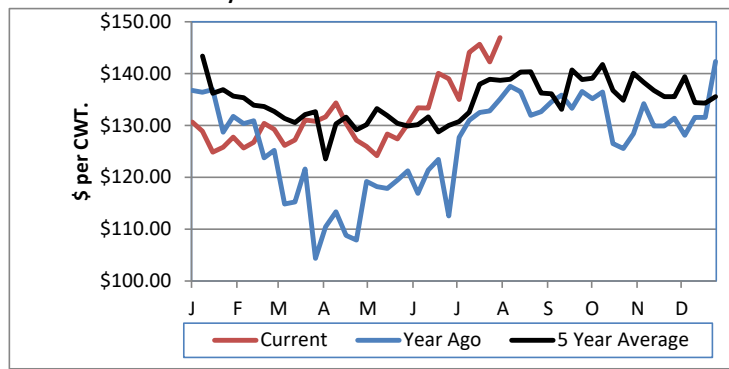
Feeder Steers:	This Week	Last Week	Year Ago
M&L 1			
400-500 lbs.	\$195.00	\$186.25	\$182.02
500-600 lbs.	\$180.57	\$178.00	\$170.77
600-700 lbs.	\$168.16	\$165.59	\$152.41
700-800 lbs.	\$159.96	\$159.59	\$143.61
800-900 lbs.	\$153.66	\$149.40	\$139.22
900-1000 lbs.	\$150.54	\$147.08	\$129.26

Feeder Heifers	This Week	Last Week	Year Ago
M&L 1			
400-500 lbs.	\$162.31	\$159.75	\$156.92
500-600 lbs.	\$159.35	\$163.66	\$147.94
600-700 lbs.	\$148.03	\$146.79	\$141.93
700-800 lbs.	\$146.94	\$142.28	\$132.79
800-900 lbs.	\$138.86	\$139.07	\$129.28
900-1000 lbs.	\$136.75	\$132.95	\$121.89

Weekly M&L 1 700-900 lb. Feeder Steer Price



Weekly M&L 1 700-800 lb. Feeder Heifer Price



**KANSAS DIRECT FEEDER CATTLE**

[Fdr Cattle Direct Summary](#)

Medium and Large 1 (Current FOB)

	Steers	Heifers
600-700 lbs.	NQ	NQ
700-800 lbs.	155.97-160.04	145.00-150.81
800-900 lbs.	147.00-153.72	135.50-142.00

**KANSAS WEEKLY GRAIN BIDS**

[Kansas Grain Bids](#)

	Terminal Elevators	Country Elevators
US NO 1 HR Winter Wheat	6.0100-6.6950	5.9100-6.7950
US NO 2 Yellow Corn	5.9300-6.3800	6.0200-6.8800
US NO 2 Sorghum	5.7025-6.1650	5.7700-6.2300
US NO 2 Soybeans	13.4375-14.2400	13.2550-14.2425
Sunflower - Oilseeds (country elevators)		NQ
Cotton - West Texas		85.08

**KANSAS WEEKLY SLAUGHTER CATTLE**

[Cattle Auction Summary](#)

Slaughter Cows

	Average	High	Low
Dressing	NQ	NQ	NQ
Prem White	75.00	79.59	NQ
Breakers	67.73	NQ	NQ
Boners	59.52	NQ	NQ
Lean			

Slaughter Bulls

	Average	High	Low
YG 1-2	92.31	99.20	79.00

**KANSAS WEEKLY ETHANOL BIDS**

[Ethanol Summary](#)

DDG	180.00-200.00
Modified Wet	NQ
Wet	70.00-98.00

**KANSAS WEEKLY HAY PRICES**

[Kansas Hay](#)

	Southwest KS	South Central KS
Alfalfa (Dairy)		
Supreme	210.00-250.00	NQ
Premium	NQ	NQ
Ground & Delivered	176.00-230.00	160.00-200.00

**KANSAS WEEKLY WTD AVG SLAUGHTER CATTLE REPORT**

[KS WEEKLY SLAUGHTER CATTLE](#)

	This Week	Last Week	Last Year
Live Str	\$120.14	\$119.02	\$96.85
Live Hfr	\$120.19	\$119.00	\$96.87
Dressed Str	\$196.00	NQ	\$160.00
Dressed Hfr	\$196.00	NQ	\$160.00

**USDA Livestock Poultry and Grain Market News**

St Joseph, MO

Phone: (816)676-7000

Email: [stjoe.lpgmn@usda.gov](mailto:stjoe.lpgmn@usda.gov)

<http://www.ams.usda.gov/lpsmarketnewspage>