

KANSAS WEEKLY MARKET RECAP

Recap For Week Ending:

August 7, 2020

Receipts: This Week: 20,721 Week Ago: 7,613 Year Ago: 18,046

Compared to last week: Feeder steers under 700 lbs 1.00 to 2.00 higher; 700-1000 lbs 2.00 to 6.00 higher, instances 1.00 to 3.00 lower on 700-900 lbs. Heifers under 700 lbs a lower undertone noted; 750-1050 lbs 1.00 to 4.00 higher, instances 1.00 to 3.00 lower on 700-900 lbs. Slaughter cows and bulls steady to 2.00 lower. Direct feeder steers and heifers sold 3.00 to 4.00 higher on limited comparable sales. On Wednesday negotiated cash trading was active on good demand. For the week live purchases moved 3.00 higher at 100.00, with a few up to 103.00.

KANSAS WEEKLY FEEDER CATTLE AVERAGES

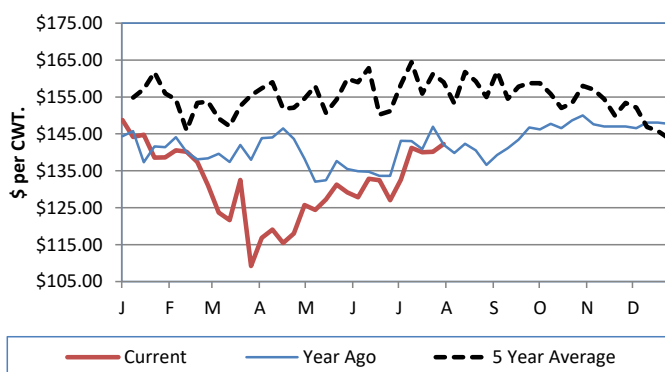
[Cattle Auction Summary](#)

Feeder Steers (M&L 1)

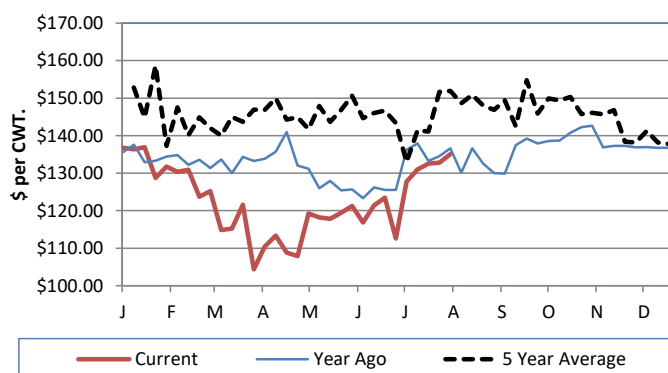
Feeder Heifers (M&L 1)

	<u>This Week</u>	<u>Last Week</u>	<u>Year Ago</u>		<u>This Week</u>	<u>Last Week</u>	<u>Year Ago</u>
400-500 lbs.	\$161.59	\$182.02	\$178.87	400-500 lbs.	\$160.99	\$156.92	\$162.28
500-600 lbs.	\$163.38	\$170.77	\$163.98	500-600 lbs.	\$155.17	\$147.94	\$149.27
600-700 lbs.	\$154.46	\$152.41	\$156.75	600-700 lbs.	\$143.89	\$141.93	\$142.31
700-800 lbs.	\$146.31	\$143.61	\$145.80	700-800 lbs.	\$135.09	\$132.79	\$136.64
800-900 lbs.	\$141.13	\$139.22	\$140.90	800-900 lbs.	\$128.17	\$129.28	\$130.93
900-1000 lbs.	\$133.37	\$129.26	\$136.00	900-1000 lbs.	\$120.49	\$121.89	\$126.76

Weekly M&L 1 700-900 lb. Feeder Steer Price



Weekly M&L 1 700-800 lb. Feeder Heifer Price



KANSAS DIRECT FEEDER CATTLE

[DC LS165](#)

(Current FOB)

	<u>Steers</u>	<u>Heifers</u>
600-700 lbs.	NQ	140.10
700-800 lbs.	149.90	133.75-137.95
800-900 lbs.	134.63-138.35	123.25

KANSAS WEEKLY GRAIN BIDS

[Kansas Grain Bids](#)

	<u>Terminal Elevators</u>	<u>Country Elevators</u>
US NO 1 HR Winter Wheat	3.805-4.2375	3.735-4.0575
US NO 2 Yellow Corn	2.7775-3.275	2.8775-3.535
US NO 2 Sorghum	3.2775-3.7075	3.0775-3.375
US NO 2 Soybeans	8.0275-8.5625	7.6575-8.2125
Sunflower - Oilseeds (Goodland)		18.45
Cotton - West Texas		56.88

KANSAS WEEKLY SLAUGHTER CATTLE

[Cattle Auction Summary](#)

Slaughter Cows

	<u>Average</u>	<u>High</u>	<u>Low</u>
Prem White	NQ	NQ	NQ
Breakers	72.43	75.72	NQ
Boners	65.92	NQ	NQ
Lean	57.26	NQ	NQ

Slaughter Bulls

	<u>Average</u>	<u>High</u>	<u>Low</u>
YG 1-2	92.12	97.63	NQ

KANSAS WEEKLY ETHANOL BIDS

[Ethanol Summary](#)

DDG	115.00-135.00
Modified Wet	NQ
Wet	40.00-05.00

KANSAS WEEKLY HAY PRICES

[Kansas Hay](#)

	<u>Southwest KS</u>	<u>South Central KS</u>
Alfalfa (Dairy)		
Supreme	180.00-190.00	210
Premium	180.00-185.00	170.00-185.00
Ground & Delivered	146.50-170.00	135.00-155.00

KANSAS WEEKLY WTD AVG

[AMS 2484](#)

SLAUGHTER CATTLE REPORT

	<u>This Week</u>	<u>Last Week</u>	<u>Last Year</u>
Live Str	\$100.01	\$96.85	\$109.62
Live Hfr	\$99.94	\$96.87	\$109.72
Dressed Str	\$163.00	\$160.00	\$179.40
Dressed Hfr	NQ	\$160.00	NQ

USDA Livestock Poultry and Grain Market News

Dodge City, KS

Phone: (620) 227-8881

Email: dodgecity.lpgmn@usda.gov

<http://www.ams.usda.gov/lpsmarketnewspage>